

## Basic Information

Product Name	Anti-NGF beta/NGF Antibody
Gene Name	NGF
Source	Rabbit
Isotype	IgG
Species Reactivity	human, mouse, rat
Tested Application	WB
Contents	500 ug/ml antibody with PBS , 0.02% NaN3 , 1 mg BSA and 50% glycerol.
Immunogen	A synthetic peptide corresponding to a sequence at the N-terminus of human NGF(162-173aa EVNINNSVFKQY), identical to the related rat sequence, and different from the related mouse sequence by one amino acid.
concentration	500 ug/ml
Purification	Immunogen affinity purified.
Observed MW	27-35KD
Dilution Ratios	Western blot(WB):1:500-2000

## Storage

12 months from date of receipt, -20°C as supplied. 6 months 2 to 8°C after reconstitution. Avoid repeated freezing and thawing.

## Background Information

Nerve growth factor is a polypeptide involved in the regulation of growth and differentiation of sympathetic and certain sensory neurons. The nucleotide sequence of human and mouse beta-NGF are very similar. The beta-subunits of nerve growth factor(NGFB) have been assigned to mouse chromosome 3 and human chromosome 1p22. The human gene for the beta subunit of nerve growth factor is located on the proximal short arm of chromosome 1. A mutation in the nerve growth factor beta gene(NGFB) causes loss of pain perception.

## Reference

Anti-NGF beta/NGF Antibody被引用在2文献中。

## Selected Validation Data

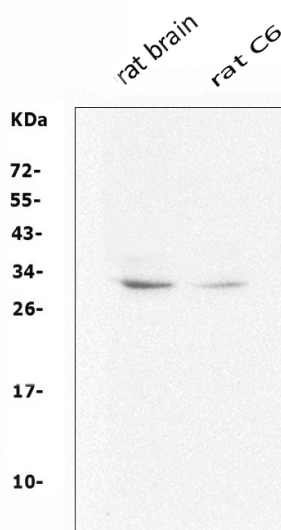


Figure 1. Western blot analysis of anti- NGF antibody (BA0611-2).

The sample well of each lane was loaded with 50ug of sample under reducing conditions. Lane 1: rat brain tissue lysates, Lane 2: Rat C6 whole cell lysates. Use rabbit anti- NGF 1:1000, probed with a goat anti-rabbit IgG-HRP secondary antibody. The signal is developed using an Enhanced Chemiluminescent detection (ECL) kit (Catalog # EK1002). A specific band was detected for NGF at approximately 27-35KD. The expected band size for NGF is at 27KD.