

Basic Information

Product Name	Anti-STAT1 Antibody
Gene Name	STAT1
Source	Rabbit
Isotype	IgG
Species Reactivity	human, mouse, rat
Tested Application	WB
Contents	500 ug/ml antibody with PBS , 0.02% NaN ₃ , 1 mg BSA and 50% glycerol.
Immunogen	A synthetic peptide corresponding to a sequence in the middle region of human STAT1(364-378aa FDKDVNERNTVKGFR), different from the related mouse sequence by one amino acid.
concentration	500 ug/ml
Purification	Immunogen affinity purified.
Observed MW	91KD(Alpha)/84KD(Beta)
Dilution Ratios	Western blot(WB):1:500-2000

Storage

12 months from date of receipt, -20°C as supplied. 6 months 2 to 8°C after reconstitution. Avoid repeated freezing and thawing.

Background Information

Signal transducer and activator of transcription 1 (STAT1) is a transcription factor which in humans is encoded by the STAT1 gene. The protein encoded by this gene is a member of the STAT protein family. In response to cytokines and growth factors, STAT family members are phosphorylated by the receptor associated kinases, and then form homo- or heterodimers that translocate to the cell nucleus where they act as transcription activators. This protein can be activated by various ligands including interferon-alpha, interferon-gamma, EGF, PDGF and IL6. This protein mediates the expression of a variety of genes, which is thought to be important for cell viability in response to different cell stimuli and pathogens. Two alternatively spliced transcript variants encoding distinct isoforms have been described.

Selected Validation Data

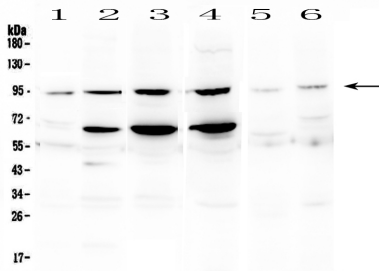


Figure 1. Western blot analysis of STAT1 using anti- STAT1 antibody (BA0619). Electrophoresis was performed on a 5-20% SDS-PAGE gel at 70V (Stacking gel) / 90V (Resolving gel) for 2-3 hours. The sample well of each lane was loaded with 50ug of sample under reducing conditions. Lane 1: rat spleen tissue lysates, Lane 2: rat thymus tissue lysates, Lane 3: rat testis tissue lysates, Lane 4: mouse testis tissue lysates, Lane 5: mouse kidney tissue lysates, Lane 6: mouse spleen tissue lysates. After Electrophoresis, proteins were transferred to a Nitrocellulose membrane at 150mA for 50-90 minutes. Blocked the membrane with 5% Non-fat Milk/ TBS for 1.5 hour at RT. The membrane was incubated with rabbit anti- STAT1 antigen affinity purified polyclonal antibody (Catalog # BA0619) at 0.5 μ g/mL overnight at 4°C, then washed with TBS-0.1%Tween 3 times with 5 minutes each and probed with a goat anti-rabbit IgG-HRP secondary antibody at a dilution of 1:10000 for 1.5 hour at RT. The signal is developed using an Enhanced Chemiluminescent detection (ECL) kit (Catalog # EK1002) with Tanon 5200 system. A specific band was detected for STAT1 at approximately 91KD. The expected band size for STAT1 is at 87KD.