

Basic Information

Product Name	Anti-ALPL Antibody
Gene Name	ALPL
Source	Rabbit
Isotype	IgG
Species Reactivity	mouse, rat
Tested Application	WB
Contents	500 ug/ml antibody with PBS , 0.02% NaN3 , 1 mg BSA and 50% glycerol.
Immunogen	A synthetic peptide corresponding to a sequence at the N-terminus of rat Alkaline Phosphatase(18-32aa, FVPEKEKDPSYWRQQ), different from the related mouse sequence by one amino acid.
concentration	500 ug/ml
Purification	Immunogen affinity purified.
Observed MW	57KD/80KD
Dilution Ratios	Western blot(WB):1:500-2000

Storage

12 months from date of receipt, -20°C as supplied. 6 months 2 to 8°C after reconstitution. Avoid repeated freezing and thawing.

Background Information

Alkaline phosphatase, tissue-nonspecific isozyme is an enzyme that in humans is encoded by the ALPL gene. There are at least four distinct but related alkaline phosphatases: intestinal, placental, placental-like, and liver/bone/kidney(tissue non-specific). The first three are located together on chromosome 2 while the tissue non-specific form is located on chromosome 1. Liver/bone/kidney alkaline phosphatase, also known as tissue-nonspecific alkaline phosphatase, acts physiologically as a lipid-anchored phosphoethanolamine(PEA) and pyridoxal-5-prime-phosphate(PLP) ectophosphatase. Mice that lack a functional form of this enzyme show normal skeletal development. This enzyme has been linked directly to a disorder known as hypophosphatasia, a disorder that is characterized by hypercalcemia and includes skeletal defects.

Reference

Anti-ALPL Antibody被引用在4文献中。

Selected Validation Data

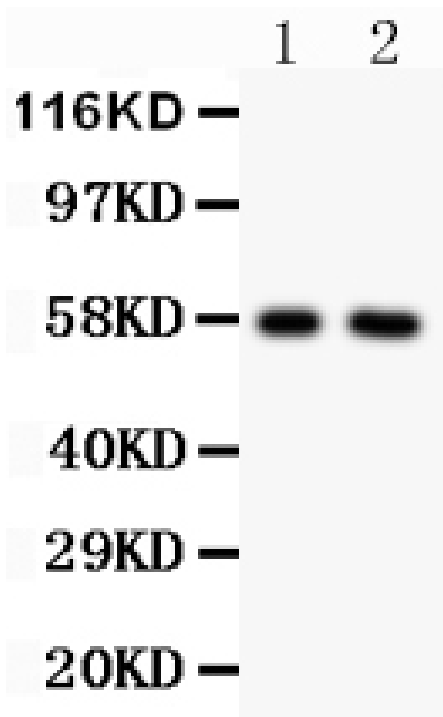


Figure 1. Western blot analysis of Anti-ALPL antibody (BA0632). The sample well of each lane was loaded with 50ug of sample under reducing conditions. Lane 1: Rat cardiac muscle tissue lysates, Lane 2: Rat brain tissue lysates, Use rabbit Anti-ALPL 1:1000, probed with a goat Anti-rabbit IgG-HRP secondary antibody. The signal is developed using an Enhanced Chemiluminescent detection (ECL) kit (Catalog # EK1002). A specific band was detected for ALPL at approximately 57KD. The expected band size for ALPL is at 57KD.