

## Basic Information

Product Name	Anti-CTGF/CCN2 Antibody		
Gene Name	CCN2		
Source	Rabbit		
Isotype	IgG		
Species Reactivity	human, mouse, rabbit, rat		
Tested Application	WB, IHC		
Contents	500ug/ml antibody with PBS , 0.02% NaN <sub>3</sub> , 1mg BSA		
Immunogen	E.coli-derived human CTGF recombinant protein (Position: R58-A349). Human CTGF shares 95.5% and 95.9% amino acid (aa) sequence identity with mouse and rat CTGF, respectively.		
concentration	500 ug/ml		
Purification	Immunogen affinity purified.		
Observed MW	38KD		
Dilution Ratios	Western blot(WB): 1:500-2000 Immunohistochemistry in paraffin section (IHC): 1:50-400 (Boiling the paraffin sections in 10mM citrate buffer,pH6.0,or PH8.0 EDTA repair liquid for 20 mins is required for the staining of formalin/paraffin sections.) Optimal working dilutions must be determined by end user.		

## Storage

12 months from date of receipt, -20°C as supplied. 6 months 2 to 8°C after reconstitution. Avoid repeated freezing and thawing.

## Background Information

CTGF, also known as CCN2 or connective tissue growth factor, is a matricellular protein of the CCN family of extracellular matrix-associated heparin-binding proteins (see also CCN intercellular signaling protein). CTGF has important roles in many biological processes, including cell adhesion, migration, proliferation, angiogenesis, skeletal development, and tissue wound repair, and is critically involved in fibrotic disease and several forms of cancers. The protein encoded by this gene is a mitogen that is secreted by vascular endothelial cells. And the encoded protein plays a role in chondrocyte proliferation and differentiation, cell adhesion in many cell types, and is related to platelet-derived growth factor. Certain polymorphisms in this gene have been linked with a higher incidence of systemic sclerosis.

## Reference

Anti-CTGF/CCN2 Antibody 被引用在4文献中。

## Selected Validation Data

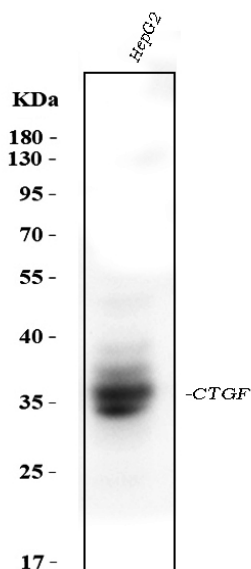


Figure 1. Western blot analysis of anti- CCN2 antibody (BA0752). The sample well of each lane was loaded with 50ug of sample under reducing conditions.

Lane 1: HepG2 whole cell lysates.

Use rabbit anti- CCN2 1:1000, probed with a goat anti-rabbit IgG-HRP secondary antibody. The signal is developed using an Enhanced Chemiluminescent detection (ECL) kit (Catalog # EK1002). A specific band was detected for CCN2 at approximately 38KD. The expected band size for CCN2 is at 38KD.

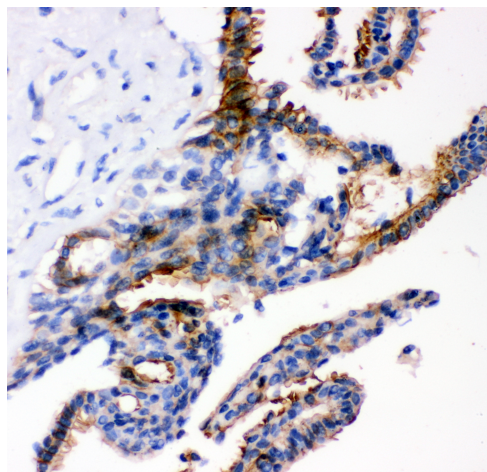


Figure 2. IHC analysis using anti- CCN2 antibody (BA0752). detected in paraffin-embedded section of human breast cancer tissue. Biotinylated goat anti-rabbit IgG was used as secondary antibody. The tissue section was developed using Streptavidin-Biotin-Complex (SABC) (Catalog # SA1022) with DAB as the chromogen.