

Basic Information

Product Name	Anti-NGF beta/NGF Antibody
Gene Name	NGF
Source	Rabbit
Isotype	IgG
Species Reactivity	human
Tested Application	WB, ELISA
Contents	500 ug/ml antibody with PBS , 0.02% NaN3 , 1 mg BSA and 50% glycerol.
Immunogen	E. coli-derived human NGFB recombinant protein(Position: S122-A241).
concentration	500 ug/ml
Purification	Immunogen affinity purified.
Observed MW	27-35KD
Dilution Ratios	Western blot(WB):1:500-2000 ELISA: 1:100-1000

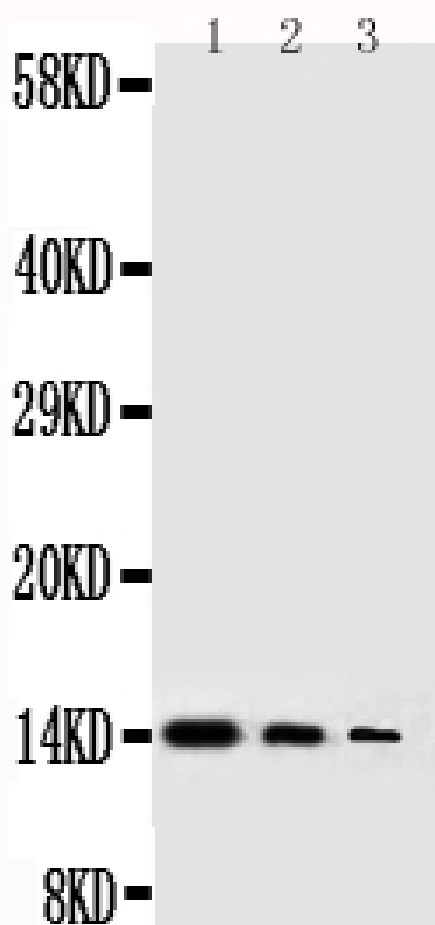
Storage

12 months from date of receipt, -20°C as supplied. 6 months 2 to 8°C after reconstitution. Avoid repeated freezing and thawing.

Background Information

Nerve growth factor is a polypeptide involved in the regulation of growth and differentiation of sympathetic and certain sensory neurons. the nucleotide sequence of human and mouse beta-NGF are very similar. the beta-subunits of nerve growth factor(NGFB) have been assigned to mouse chromosome 3 and human chromosome 1p22. The human gene for the beta subunit of nerve growth factor is located on the proximal short arm of chromosome 1. A mutation in the nerve growth factor beta gene(NGFB) causes loss of pain perception.

Selected Validation Data



Lane 1: Recombinant Human NGFB Protein 10ng

Lane 2: Recombinant Human NGFB Protein 5ng

Lane 3: Recombinant Human NGFB Protein 2.5ng