

## Basic Information

<b>Product Name</b>	Anti-PAI-1/SERPINE1 Antibody
<b>Gene Name</b>	Serpine1
<b>Source</b>	Rabbit
<b>Isotype</b>	IgG
<b>Species Reactivity</b>	human
<b>Tested Application</b>	IHC
<b>Contents</b>	500 ug/ml antibody with PBS , 0.02% NaN3 , 1 mg BSA and 50% glycerol.
<b>Immunogen</b>	E. coli-derived rat PAI1 recombinant protein (Position: S24-D240).
<b>concentration</b>	500 ug/ml
<b>Purification</b>	Immunogen affinity purified.
<b>Dilution Ratios</b>	Immunohistochemistry in paraffin section IHC-(P): 1:50-400 (Boiling the paraffin sections in 10mM citrate buffer,pH6.0,or PH8.0 EDTA repair liquid for 20 mins is required for the staining of formalin/paraffin sections.) Optimal working dilutions must be determined by end user.

## Storage

12 months from date of receipt, -20°C as supplied. 6 months 2 to 8°C after reconstitution. Avoid repeated freezing and thawing.

## Background Information

Plasminogen activator inhibitor-1 (PAI-1) also known as endothelial plasminogen activator inhibitor or serpin E1 is a protein that in humans is encoded by the SERPINE1 gene. This gene encodes a member of the serine proteinase inhibitor (serpin) superfamily. This member is the principal inhibitor of tissue plasminogen activator (tPA) and urokinase (uPA), and hence is an inhibitor of fibrinolysis. Defects in this gene are the cause of plasminogen activator inhibitor-1 deficiency (PAI-1 deficiency), and high concentrations of the gene product are associated with thrombophilia. Alternatively spliced transcript variants encoding different isoforms have been found for this gene.

## Selected Validation Data

Product datasheet

## Anti-PAI-1/SERPINE1 Antibody

Catalog Number: **BA1334-1**

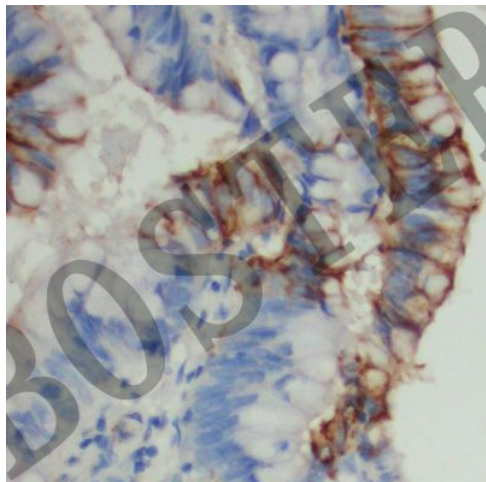
**BOSTER**

antibody and ELISA experts

**BOSTER BIOLOGICAL TECHNOLOGY**

Special NO.1, International Enterprise Center,  
2nd Guanshan Road, Wuhan, China

**Web:** [www.boster.com.cn](http://www.boster.com.cn) **Phone:** +86 027-67845390 **Fax:** +86 027-67845390 **Email:** [boster@boster.com.cn](mailto:boster@boster.com.cn)



PAI-1(BA1334-1)直肠癌标本, 石蜡切片, SABC法, DAB显色.