

## Basic Information

Product Name	Anti-SRC Antibody
Gene Name	SRC
Source	Rabbit
Isotype	IgG
Species Reactivity	human,mouse,rat
Tested Application	WB
Contents	500 ug/ml antibody with PBS , 0.02% Na <sub>2</sub> S <sub>2</sub> O <sub>3</sub> , 1 mg BSA and 50% glycerol.
Immunogen	A synthetic peptide corresponding to a sequence at the C-terminus of human Src(514-536aa YLQAFLEDYFTSTEPQYQPGENL), identical to the related rat and mouse sequences.
concentration	500 ug/ml
Purification	Immunogen affinity purified.
Observed MW	60KD
Dilution Ratios	Western blot (WB):1:500-2000

## Storage

12 months from date of receipt, -20°C as supplied. 6 months 2 to 8°C after reconstitution. Avoid repeated freezing and thawing.

## Background Information

Sarcoma(Scr) is a proto-oncogenic tyrosine kinase originally discovered by J. Michael Bishop and Harold E. Varmus. belongs to a family of non-receptor tyrosine kinases called Src family kinases. The human SRC protooncogene was assigned to chromosome 20. Its gene is mapped to 20q12-q13. The discovery of Src family proteins has been instrumental to the modern understanding of cancer as a disease where normally healthy cellular signalling has gone awry. This proto-oncogene may play a role in the regulation of embryonic development and cell growth.

## Selected Validation Data

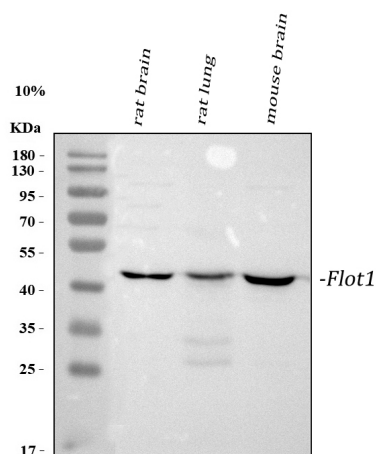


Figure 1. Western blot analysis of anti-SRC antibody (BA1404-1).

The sample well of each lane was loaded with 30 ug of sample under reducing conditions.

Lane 1: human PC-3 whole cell lysates,

Lane 2: human SH-SY5Y whole cell lysates,

Lane 3: rat PC-12 whole cell lysates.

After electrophoresis, proteins were transferred to a membrane.

Then the membrane was incubated with rabbit anti-SRC antigen affinity purified polyclonal antibody (BA1404-1) and probed with a goat anti-rabbit IgG-HRP secondary antibody (Catalog # BA1054).

The signal is developed using ECL Plus Western Blotting Substrate (Catalog # AR1197). A specific band was detected for SRC at approximately 60 kDa. The expected band size for SRC is at 60 kDa.