

## Basic Information

Product Name	Anti-IL4 Antibody	
Gene Name	IL4	
Source	Rabbit	
Isotype	IgG	
Species Reactivity	human	
Tested Application	WB, IHC, ELISA	
Contents	500 ug/ml antibody with PBS , 0.02% NaN <sub>3</sub> , 1 mg BSA and 50% glycerol.	
Immunogen	E. coli-derived human IL-4 recombinant protein(Position: H25-S153).	
concentration	500 ug/ml	
Purification	Immunogen affinity purified.	
Observed MW	17KD	
Dilution Ratios	Western blot(WB): 1:500-2000 Immunohistochemistry in paraffin section (IHC): 1:50-400 ELISA: 1:100-1000 (Boiling the paraffin sections in 10mM citrate buffer,pH6.0,or PH8.0 EDTA repair liquid for 20 mins is required for the staining of formalin/paraffin sections.) Optimal working dilutions must be determined by end user.	

## Storage

12 months from date of receipt, -20°C as supplied. 6 months 2 to 8°C after reconstitution. Avoid repeated freezing and thawing.

## Background Information

Interleukin-4(IL-4), also known as a B-cell stimulatory factor1(BSF1), is an immunomodulatory cytokine, which can inhibit the growth of tumour cells. The human cDNA contains a single open reading frame encoding a protein of 153 amino acids, including a putative signal peptide. IL-4 may act as an autocrine growth factor in pancreatic cancer cells and also give rise to the possibility that cancer-derived IL-4 may suppress cancer-directed immunosurveillance in vivo in addition to its growth-promoting effects, thereby facilitating pancreatic tumor growth and metastasis. The mouse and human genes and their protein products show structural and functional similarities. The human IL-4 gene, which occurs as a single copy in the haploid genome, is mapped on chromosome 5.2 The standard product used in this kit is recombinant human IL-4, consisting of 130 amino acids with the molecular mass of 14KDa.

## Selected Validation Data

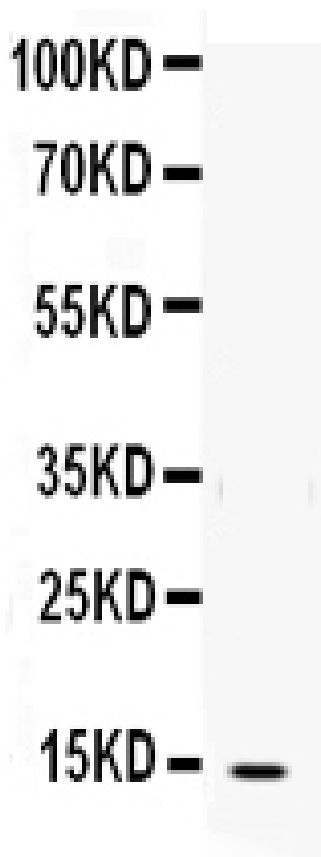


Figure. Western blot analysis of IL-4 using anti- IL-4 antibody (BA14809). Electrophoresis was performed on a 5-20% SDS-PAGE gel at 70V (Stacking gel) / 90V (Resolving gel) for 2-3 hours. The sample well of each lane was loaded with 50ug of sample under reducing conditions. Lane: Recombinant Human IL-4 Protein 0.5ng, After Electrophoresis, proteins were transferred to a Nitrocellulose membrane at 150mA for 50-90 minutes. Blocked the membrane with 5% Non-fat Milk/ TBS for 1.5 hour at RT. The membrane was incubated with rabbit anti- IL-4 antigen affinity purified polyclonal antibody (Catalog # BA14809) at 0.5 µg/mL overnight at 4°C, then washed with TBS-0.1%Tween 3 times with 5 minutes each and probed with a goat anti-rabbit IgG-HRP secondary antibody at a dilution of 1:10000 for 1.5 hour at RT. The signal is developed using an Enhanced Chemiluminescent detection (ECL) kit (Catalog # EK1002) with Tanon 5200 system. A specific band was detected for IL-4 at approximately 14KD. The expected band size for IL-4 is at 14KD.