

Basic Information

Product Name	Anti-Connexin-32/GJB1 Antibody	
Gene Name	GJB1	
Source	Rabbit	
Isotype	IgG	
Species Reactivity	human, mouse, rat	
Tested Application	WB, IHC	
Contents	500 ug/ml antibody with PBS , 0.02% NaN3 , 1 mg BSA and 50% glycerol.	
Immunogen	A synthetic peptide corresponding to a sequence in the middle region of human Connexin 32/GJB1(215-231aa RACARRAQRRSNPPSRK), identical to the related mouse and rat sequences.	
concentration	500 ug/ml	
Purification	Immunogen affinity purified.	
Observed MW	32KD	
Dilution Ratios	Western blot(WB): 1:500-2000 Immunohistochemistry in paraffin section (IHC): 1:50-400 (Boiling the paraffin sections in 10mM citrate buffer,pH6.0,or PH8.0 EDTA repair liquid for 20 mins is required for the staining of formalin/paraffin sections.) Optimal working dilutions must be determined by end user.	

Storage

12 months from date of receipt, -20°C as supplied. 6 months 2 to 8°C after reconstitution. Avoid repeated freezing and thawing.

Background Information

Gap junction beta-1 protein (GJB1), also known as connexin 32 (Cx32) is a transmembrane protein that in humans is encoded by the GJB1 gene. This gene encodes a member of the gap junction protein family. The gap junction proteins are membrane-spanning proteins that assemble to form gap junction channels that facilitate the transfer of ions and small molecules between cells. According to sequence similarities at the nucleotide and amino acid levels, the gap junction proteins are divided into two categories, alpha and beta. Mutations in this gene cause X-linked Charcot-Marie-Tooth disease, an inherited peripheral neuropathy. Alternatively spliced transcript variants encoding the same protein have been found for this gene.

Selected Validation Data

Product datasheet

Anti-Connexin-32/GJB1 Antibody

Catalog Number: **BA1592**

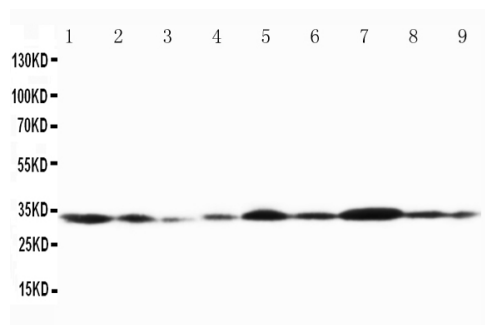
BOSTER

antibody and ELISA experts

BOSTER BIOLOGICAL TECHNOLOGY

Special NO.1, International Enterprise Center,
2nd Guanshan Road, Wuhan, China

Web: www.boster.com.cn **Phone:** +86 027-67845390 **Fax:** +86 027-67845390 **Email:** boster@boster.com.cn



Lane 1: Rat Cardiac Muscle Tissue Lysate
Lane 2: Rat Cardiac Muscle Tissue Lysate
Lane 3: Rat Skeletal Muscle Tissue Lysate
Lane 4: Rat Brain Tissue Lysate
Lane 5: MCF-7 Cell Lysate
Lane 6: HELA Cell Lysate
Lane 7: SMMC Cell Lysate
Lane 8: JURKAT Cell Lysate
Lane 9: COLO320 Cell Lysate