

Basic Information

Product Name	Anti-IL2 Antibody
Gene Name	IL2
Source	Rabbit
Isotype	IgG
Species Reactivity	mouse
Tested Application	WB
Contents	500 ug/ml antibody with PBS , 0.02% NaN3 , 1 mg BSA and 50% glycerol.
Immunogen	A synthetic peptide corresponding to a sequence at the C-terminus of mouse IL-2(151-169aa DFLRRWIAFCQSIISTSPQ).
concentration	500 ug/ml
Purification	Immunogen affinity purified.
Observed MW	18KD
Dilution Ratios	Western blot(WB):1:500-2000

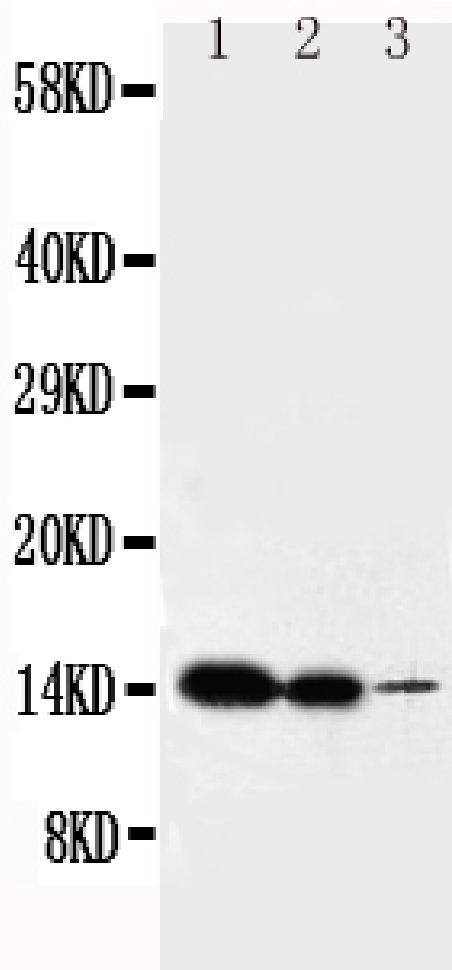
Storage

12 months from date of receipt, -20°C as supplied. 6 months 2 to 8°C after reconstitution. Avoid repeated freezing and thawing.

Background Information

IL-2, Interleukin-2, formerly referred to as T-cell growth factor, is a powerfully immunoregulatory lymphokine that is produced by lectin-or antigen-activated T cells. In situ hybridization, the IL-2 gene is assigned to 4q26-q28. IL2 can act as a growth hormone for both B and T lymphocytes. It is useful in the study of the molecular nature of T-cell differentiation and, like interferons, augments natural killer cell activity.

Selected Validation Data



Lane 1: Recombinant Mouse IL2 Protein 10ng Lane 2: Recombinant
Mouse IL2 Protein 5ng Lane 3: Recombinant Mouse IL2 Protein 2.5ng