

Basic Information

Product Name	Anti-Nephrin/NPHS1 Antibody	
Gene Name	NPHS1	
Source	Rabbit	
Isotype	IgG	
Species Reactivity	human, mouse, rat	
Tested Application	WB, IHC	
Contents	500 ug/ml antibody with PBS , 0.02% NaN3 , 1mg BSA	
Immunogen	A synthetic peptide	
concentration	500 ug/ml	
Purification	Immunogen affinity purified.	
Observed MW	135KD	
Dilution Ratios	Western blot(WB): 1:500-2000 Immunohistochemistry in paraffin section (IHC): 1:50-400 (Boiling the paraffin sections in 10mM citrate buffer,pH6.0,or PH8.0 EDTA repair liquid for 20 mins is required for the staining of formalin/paraffin sections.) Optimal working dilutions must be determined by end user.	

Storage

12 months from date of receipt, -20°C as supplied. 6 months 2 to 8°C after reconstitution. Avoid repeated freezing and thawing.

Background Information

This gene encodes a member of the immunoglobulin family of cell adhesion molecules that functions in the glomerular filtration barrier in the kidney. The gene is primarily expressed in renal tissues, and the protein is a type-1 transmembrane protein found at the slit diaphragm of glomerular podocytes. The slit diaphragm is thought to function as an ultrafilter to exclude albumin and other plasma macromolecules in the formation of urine. Mutations in this gene result in Finnish-type congenital nephrosis 1, characterized by severe proteinuria and loss of the slit diaphragm and foot processes.

Reference

Anti-Nephrin/NPHS1 Antibody被引用在4文献中。

Selected Validation Data



Figure 1. Western blot analysis of Anti-Nephrin(NPHS1) antibody (BA1669). The sample well of each lane was loaded with 50ug of sample under reducing conditions. Lane 1: Rat kidney tissue lysates, Use rabbit Anti-Nephrin(NPHS1) 1:1000, probed with a goat Anti-rabbit IgG-HRP secondary antibody. The signal is developed using an Enhanced Chemiluminescent detection (ECL) kit (Catalog # EK1002). A specific band was detected for Nephrin(NPHS1) at approximately 134KD. The expected band size for Nephrin(NPHS1) is at 134KD.

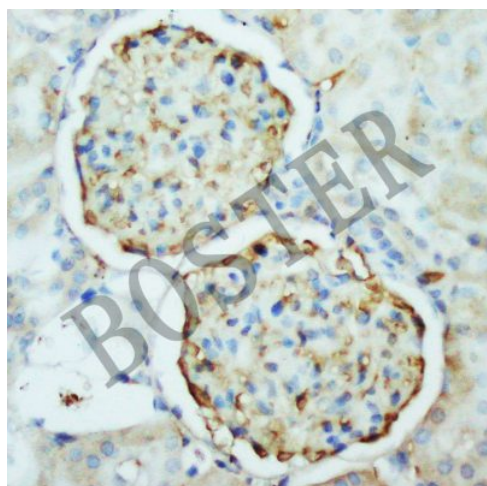


Figure 2. IHC analysis using Anti-Nephrin(NPHS1) antibody (BA1669) detected in paraffin-embedded section of rat kidney tissue. Biotinylated goat Anti-rabbit IgG was used as secondary antibody. The tissue section was developed using Streptavidin-Biotin-Complex (SABC) (Catalog # SA1022) with DAB as the chromogen.