

## Basic Information

Product Name	Anti-TLR4 Antibody	
Gene Name	TLR4	
Source	Rabbit	
Isotype	IgG	
Species Reactivity	human	
Tested Application	WB, IHC	
Contents	500 ug/ml antibody with PBS , 0.02% NaN <sub>3</sub> and 50% glycerol.	
Immunogen	A synthetic peptide corresponding to a sequence at the N-terminus of human TLR4(50-68aa DNLPFSTKNLDLSFNPLRH).	
concentration	500 ug/ml	
Purification	Immunogen affinity purified.	
Observed MW	100KD	
Dilution Ratios	Western blot(WB): 1:500-2000 Immunohistochemistry in paraffin section (IHC): 1:50-400 (Boiling the paraffin sections in 10mM citrate buffer,pH6.0,or PH8.0 EDTA repair liquid for 20 mins is required for the staining of formalin/paraffin sections.) Optimal working dilutions must be determined by end user.	

## Storage

12 months from date of receipt, -20°C as supplied. 6 months 2 to 8°C after reconstitution. Avoid repeated freezing and thawing.

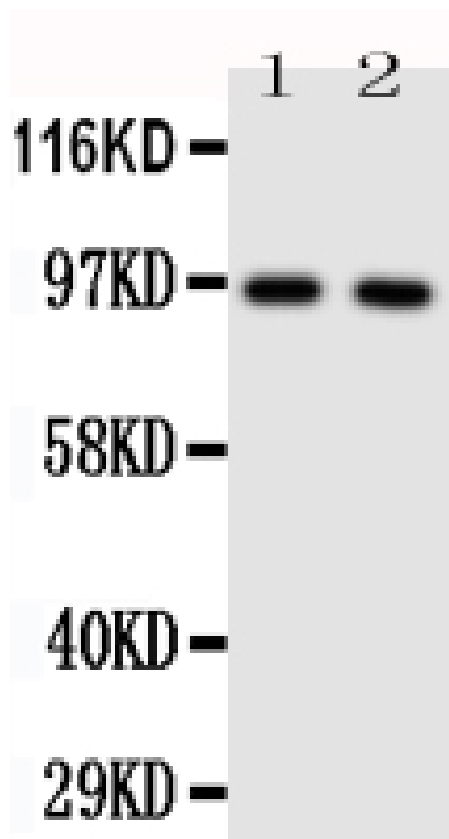
## Background Information

TLR4, Toll-like receptor 4, is a protein that in humans is encoded by the TLR4 gene. TLR 4 is a toll-like receptor. TLR4, the human homolog of Drosophila Toll, is a type I transmembrane protein with an extracellular domain consisting of a leucine-rich repeat region and an intracellular domain homologous to that of human interleukin-1 receptor. The TLR4 gene is mapped to chromosome 9q32-q33 by fluorescence in situ hybridization. It detects lipopolysaccharide from Gram-negative bacteria and is thus important in the activation of the innate immune system. The protein encoded by this gene is a member of the Toll-like receptor (TLR) family, which plays a fundamental role in pathogen recognition and activation of innate immunity. TLRs are highly conserved from Drosophila to humans and share structural and functional similarities. They recognize pathogen-associated molecular patterns (PAMPs) that are expressed on infectious agents, and mediate the production of cytokines necessary for the development of effective immunity.

## Reference

Anti-TLR4 Antibody被引用在46文献中。

## Selected Validation Data



Lane 1: HELA Cell Lysate Lane 2: SMMC Cell Lysate