

## Basic Information

|                           |  |
|---------------------------|--|
| <b>Product Name</b>       | Anti-LAMC1/LAMC2/LAMC3 Antibody  |
| <b>Gene Name</b>          | Lamc1/Lamc2/Lamc3  |
| <b>Source</b>             | Rabbit   |
| <b>Isotype</b>            | IgG  |
| <b>Species Reactivity</b> | human  |
| <b>Tested Application</b> | IHC  |
| <b>Contents</b>           | 500 ug/ml antibody with PBS , 0.02% Na <sub>2</sub> S <sub>2</sub> O <sub>3</sub> , 1 mg BSA and 50% glycerol.   |
| <b>Immunogen</b>          | Human fibroblasts derived.   |
| <b>concentration</b>      | 500 ug/ml  |
| <b>Purification</b>       | Immunogen affinity purified.   |
| <b>Dilution Ratios</b>    | Immunohistochemistry in paraffin section (IHC): 1:50-400<br>(Boiling the paraffin sections in 10mM citrate buffer,pH6.0,or PH8.0 EDTA repair liquid for 20 mins is required for the staining of formalin/paraffin sections.) Optimal working dilutions must be determined by end user. |

## Storage

12 months from date of receipt, -20°C as supplied. 6 months 2 to 8°C after reconstitution. Avoid repeated freezing and thawing.

## Background Information

Laminins are major proteins in the basal lamina (one of the layers of the basement membrane), a protein network foundation for most cells and organs. Laminins form independent networks and are associated with type IV collagen networks via entactin, fibronectin, and perlecan. They are important and biologically active parts of the basal lamina, influencing cell differentiation, migration, and adhesion, as well as phenotype and survival. Laminins are trimeric proteins that contain an  $\alpha$ -chain, a  $\beta$ -chain, and a  $\gamma$ -chain, found in five, four, and three genetic variants, respectively. Laminins critically contribute to cell attachment and differentiation, cell shape and movement, maintenance of tissue phenotype, and promotion of tissue survival.

## Reference

Anti-LAMC1/LAMC2/LAMC3 Antibody被引用在1文献中。

## Selected Validation Data

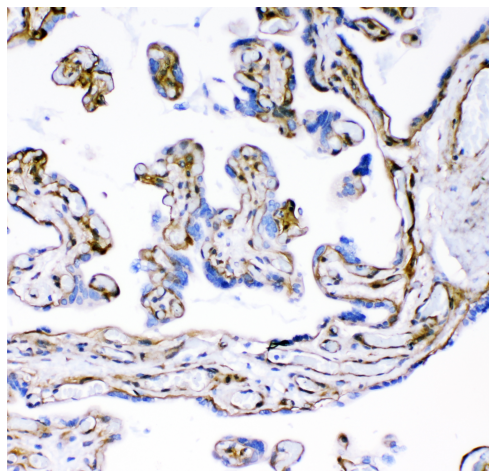


Figure 1. IHC analysis of Laminin/Lamc1/Lamc2/Lamc3 using anti-Laminin/Lamc1/Lamc2/Lamc3 antibody (BA1762-1).

Laminin/Lamc1/Lamc2/Lamc3 was detected in a paraffin-embedded section of human placenta tissue. The tissue section was developed using HRP Conjugated Rabbit IgG Super Vision Assay Kit (Catalog # SV0002) with DAB (Catalog # AR1022) as the chromogen.