

Basic Information

Product Name	Anti-STAT1 Antibody
Gene Name	STAT1
Source	Rabbit
Isotype	IgG
Species Reactivity	human, mouse
Tested Application	WB, FCM
Contents	500 ug/ml antibody with PBS , 0.02% NaN3 , 1 mg BSA and 50% glycerol.
Immunogen	A synthetic peptide corresponding to a sequence at the C-terminus of human STAT1(736-750aa RIVGSVEFDSMMNTV).
concentration	500 ug/ml
Purification	Immunogen affinity purified.
Observed MW	91KD
Dilution Ratios	Western blot (WB): 1:500-2000 Flow cytometry (FCM):1-3 $\mu\text{g}/1 \times 10^6$ cells

Storage

12 months from date of receipt, -20°C as supplied. 6 months 2 to 8°C after reconstitution. Avoid repeated freezing and thawing.

Background Information

Signal transducer and activator of transcription 1 (STAT1) is a transcription factor which in humans is encoded by the STAT1 gene. The protein encoded by this gene is a member of the STAT protein family. In response to cytokines and growth factors, STAT family members are phosphorylated by the receptor associated kinases, and then form homo- or heterodimers that translocate to the cell nucleus where they act as transcription activators. This protein can be activated by various ligands including interferon-alpha, interferon-gamma, EGF, PDGF and IL6. This protein mediates the expression of a variety of genes, which is thought to be important for cell viability in response to different cell stimuli and pathogens. Two alternatively spliced transcript variants encoding distinct isoforms have been described.

Selected Validation Data

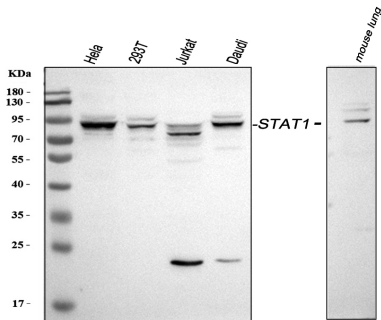


Figure 1. Western blot analysis of anti- STAT1 antibody (BA1968-2). The sample well of each lane was loaded with 30ug of sample under reducing conditions.

Lane 1: human Hela whole cell lysates,
Lane 2: human 293T whole cell lysates,
Lane 3: human Jurkat whole cell lysates,
Lane 4: human Daudi whole cell lysates,
Lane 5: mouse lung tissue lysates.

Use rabbit anti- STAT1 1:1000, probed with a goat anti-rabbit IgG-HRP secondary antibody. The signal is developed using an Enhanced Chemiluminescent detection (ECL) kit (Catalog#EK1002). A specific band was detected for STAT1 at approximately 91KD. The expected band size for STAT1 is at 87KD.

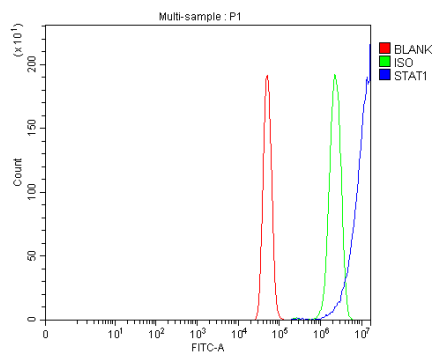


Figure 2. Flow cytometry analysis of U251 cell (1×10^6) DyLight 488 conjugated goat anti-rabbit IgG(blue) was used as secondary antibody. Isotype control antibody (Green line) was rabbit IgG DyLight 488. Unlabelled sample (Red line).