

Basic Information

| | |
|---------------------------|--|
| Product Name | Anti-Caspase 8/CASP8 (p18) Antibody |
| Gene Name | CASP8 |
| Source | Rabbit |
| Isotype | IgG |
| Species Reactivity | human, mouse, rat |
| Tested Application | WB |
| Contents | 500 ug/ml antibody with PBS , 0.02% NaN3 , 1 mg BSA and 50% glycerol. |
| Immunogen | A synthetic peptide corresponding to a sequence in the middle region of human Caspase-8(P18)(240-259aa DKVYQMKSKPRGYCLIINNH), different from the related mouse sequence by one amino acid. |
| concentration | 500 ug/ml |
| Purification | Immunogen affinity purified. |
| Observed MW | 55KD |
| Dilution Ratios | Western blot(WB):1:500-2000 |

Storage

12 months from date of receipt, -20°C as supplied. 6 months 2 to 8°C after reconstitution. Avoid repeated freezing and thawing.

Background Information

Caspase 8 is a caspase protein. It most likely acts upon caspase 3. This gene encodes a member of the cysteine-aspartic acid protease(caspase) family. The human CASP8 gene, whose product is also known as caspase 8 and FLICE, encodes an interleukin-1beta converting enzyme(ICE)-related cysteine protease that is activated by the engagement of several different death receptors. Caspase 8 is immediately recruited to the Fas receptor once it oligomerizes, and its protease activity is crucial for the apoptotic response generated by the resulting death-inducing signaling complex(DISC). This gene contains at least 11 exons spanning approximately 30kb on human chromosome band 2q33-34. This region of human chromosome 2 was previously reported as the location of the CASP10 gene, whose product is closely related to caspase 8. Caspase-8 deficiency in humans is compatible with normal development and shows that caspase-8 has a postnatal role in immune activation of naive lymphocytes.

Reference

Anti-Caspase 8/CASP8 (p18) Antibody被引用在1文献中。

Selected Validation Data

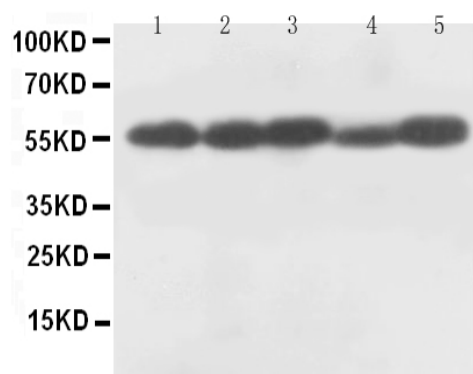


Figure 1. Western blot analysis of Anti-CASP8(P18) antibody (BA2143-2). The sample well of each lane was loaded with 50ug of sample under reducing conditions. Lane 1: Rat thymus tissue lysates, Lane 2: Rat liver tissue lysates, Lane 3: MCF-7 whole cell lysates, Lane 4: HELA whole cell lysates, Lane 5: SMMC whole cell lysates, Use rabbit Anti-CASP8(P18) 1:1000, probed with a goat Anti-rabbit IgG-HRP secondary antibody. The signal is developed using an Enhanced Chemiluminescent detection (ECL) kit (Catalog # EK1002). A specific band was detected for CASP8(P18) at approximately 55KD. The expected band size for CASP8(P18) is at 55KD.