

Basic Information

Product Name	Anti-PAPPA Antibody
Gene Name	PAPPA
Source	Rabbit
Isotype	IgG
Species Reactivity	human, mouse, rabbit, rat
Tested Application	IHC
Contents	500 ug/ml antibody with PBS , 0.02% Na ₂ S ₂ O ₃ , 1 mg BSA and 50% glycerol.
Immunogen	E.coli-derived human PAPP A recombinant protein (Position: R95-Q388). Human PAPP A shares 88% amino acid (aa) sequence identity with mouse PAPP A.
concentration	500 ug/ml
Purification	Immunogen affinity purified.
Dilution Ratios	Immunohistochemistry in paraffin section IHC-(P): 1:50-400 (Boiling the paraffin sections in 10mM citrate buffer,pH6.0,or PH8.0 EDTA repair liquid for 20 mins is required for the staining of formalin/paraffin sections.) Optimal working dilutions must be determined by end user.

Storage

12 months from date of receipt, -20°C as supplied. 6 months 2 to 8°C after reconstitution. Avoid repeated freezing and thawing.

Background Information

Pappalysin-1, also known as DIPLA1, is a protein that in humans is encoded by the PAPPA gene. It is mapped to 9q33.1. PAPPA is found in the ovarian follicles, follicular fluid, luteal cells, and fallopian tubes of nonpregnant women and in the seminal vesicles and seminal fluid of males. This gene encodes a secreted metalloproteinase which cleaves insulin-like growth factor binding proteins (IGFBPs). It is thought to be involved in local proliferative processes such as wound healing and bone remodeling. Low plasma level of this protein has been suggested as a biochemical marker for pregnancies with aneuploid fetuses. It has been found that circulating PAPPA is a disulfide-bridged complex with proMBP in which the subunits of the constituents are present in a 1:1 molar ratio.

Reference

Anti-PAPPA Antibody被引用在1文献中。

Product datasheet

Anti-PAPPA Antibody

Catalog Number: **BA2327-1**

BOSTER

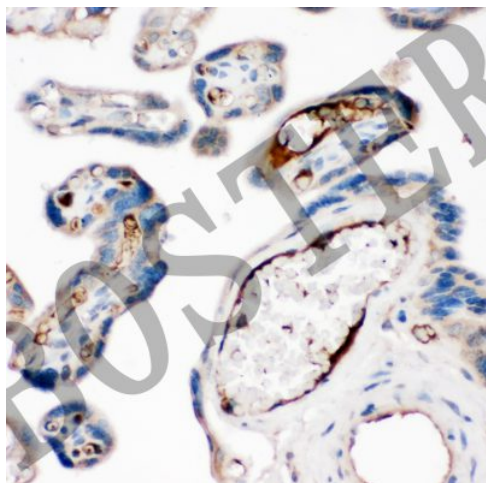
antibody and ELISA experts

BOSTER BIOLOGICAL TECHNOLOGY

Special NO.1, International Enterprise Center,
2nd Guanshan Road, Wuhan, China

Web: www.boster.com.cn Phone: +86 027-67845390 Fax: +86 027-67845390 Email: boster@boster.com.cn

Selected Validation Data



PAPPA(BA2327-1)胎盘标本, 石蜡切片, SABC法, DAB显色.