

Basic Information

Product Name	Anti-BRAF Antibody
Gene Name	BRAF
Source	Rabbit
Isotype	IgG
Species Reactivity	human, mouse, rat
Tested Application	WB
Contents	500 ug/ml antibody with PBS , 0.02% NaN ₃ , 1 mg BSA and 50% glycerol.
Immunogen	A synthetic peptide corresponding to a sequence in the middle region of human B Raf(344-362aa QPFRPADEDHRNQFGQRDR), identical to the related rat and mouse sequences.
concentration	500 ug/ml
Purification	Immunogen affinity purified.
Observed MW	85KD
Dilution Ratios	Western blot(WB):1:500-2000

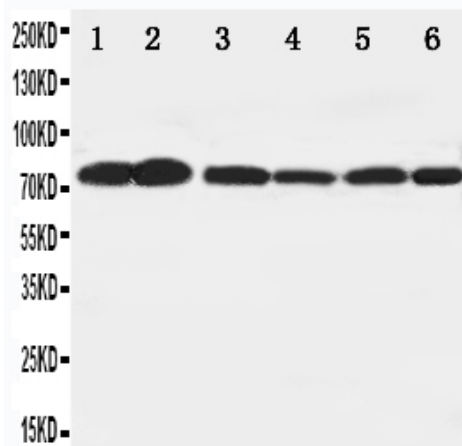
Storage

12 months from date of receipt, -20°C as supplied. 6 months 2 to 8°C after reconstitution. Avoid repeated freezing and thawing.

Background Information

BRAF(v-raf murine sarcoma viral oncogene homolog B1) is a human gene that makes a protein called B-Raf, also known as ONCOGENE BRAF, BRAF1, RAFB1, Proto-oncogene B-Raf p94, v-Raf murine sarcoma viral oncogene homolog B1, proto-oncogene B-Raf, v-Raf murine sarcoma viral oncogene homolog B1, while the protein is more formally known as serine/threonine-protein kinase B-Raf. BRAF deduced 651-amino acid protein has a calculated molecular mass of 72.5 kD. Northern blot analysis detected transcripts of 10 and 13 kb in cerebrum, fetal brain, and placenta and transcripts of 2.6 and 4.5 kb in testis. Testis also showed lower expression of the 10- and 13-kb transcripts. B-Raf is a member of the Raf kinase family of serine/threonine-specific protein kinases. This protein plays a role in regulating the MAP kinase/ERKs signaling pathway, which affects cell division, differentiation, and secretion.

Selected Validation Data



Lane 1: Rat Brain Tissue Lysate Lane 2: Rat Testis Tissue Lysate

Lane 3: Rat Liver Tissue Lysate Lane 4: SW620 Cell Lysate

Lane 5: COLO320 Cell Lysate Lane 6: PC-12 Cell Lysate