

Basic Information

Product Name	Anti-NRF1 Antibody	
Gene Name	NRF1	
Source	Rabbit	
Isotype	IgG	
Species Reactivity	human, mouse, rat	
Tested Application	WB, IHC, ICC	
Contents	500 ug/ml antibody with PBS , 0.02% NaN3 , 1 mg BSA and 50% glycerol.	
Immunogen	A synthetic peptide corresponding to a sequence in the middle region of human NRF1(272-288aa QHGREDLLYAFEDQQTQ), identical to the related rat and mouse sequences.	
concentration	500 ug/ml	
Purification	Immunogen affinity purified.	
Observed MW	68KD	
Dilution Ratios	Western blot(WB): 1:500-2000 Immunohistochemistry in paraffin section (IHC): 1:50-400 Immunocytochemistry: 1:50-400 (Boiling the paraffin sections in 10mM citrate buffer,pH6.0,or PH8.0 EDTA repair liquid for 20 mins is required for the staining of formalin/paraffin sections.) Optimal working dilutions must be determined by end user.	

Storage

12 months from date of receipt, -20°C as supplied. 6 months 2 to 8°C after reconstitution. Avoid repeated freezing and thawing.

Background Information

Nuclear respiratory factor 1, is also known as NRF1. This gene encodes a protein that homodimerizes and functions as a transcription factor which activates the expression of some key metabolic genes regulating cellular growth and nuclear genes required for respiration, heme biosynthesis, and mitochondrial DNA transcription and replication. The protein has also been associated with the regulation of neurite outgrowth. Alternative splicing results in multiple transcript variants. Confusion has occurred in bibliographic databases due to the shared symbol of NRF1 for this gene and for "nuclear factor (erythroid-derived 2)-like 1" which has an official symbol of NFE2L1.

Selected Validation Data

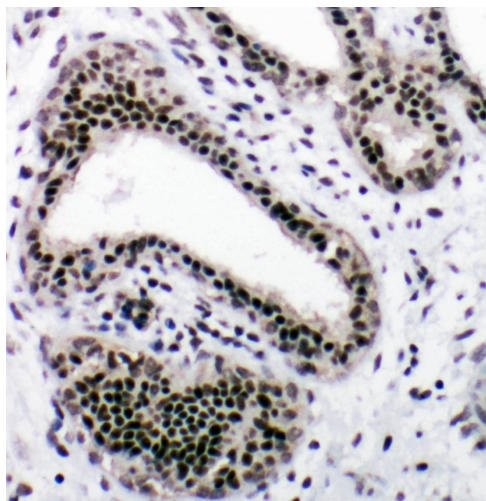


Figure 1. IHC analysis using Anti-NRF1 antibody (BA3193) detected in paraffin-embedded section of human mammary cancer tissue. Biotinylated goat Anti-rabbit IgG was used as secondary antibody. The tissue section was developed using Streptavidin-Biotin-Complex (SABC) (Catalog # SA1022) with DAB as the chromogen.

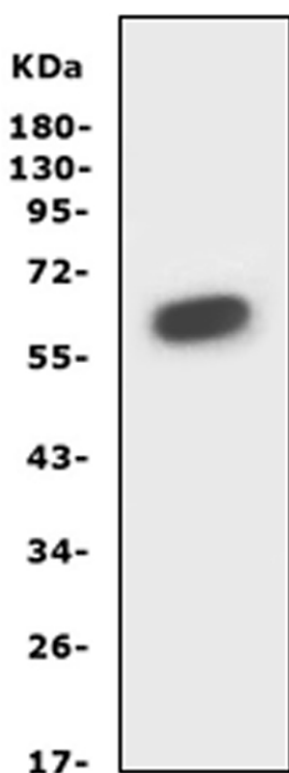


Figure 5. Western blot analysis of Anti-NRF1 antibody (BA3193). The sample well of each lane was loaded with 50ug of sample under reducing conditions. Lane 1: Rat spleen tissue lysate. Use rabbit Anti-NRF1 1:1000, probed with a goat Anti-rabbit IgG-HRP secondary antibody. The signal is developed using an Enhanced Chemiluminescent detection (ECL) kit (Catalog # EK1002). A specific band was detected for NRF1 at approximately 68KD. The expected band size for NRF1 is at 54KD.