

Basic Information

Product Name	Anti-CD90/THY1 Antibody	
Gene Name	THY1	
Source	Rabbit	
Isotype	IgG	
Species Reactivity	human	
Tested Application	WB,IHC	
Contents	500 ug/ml antibody with PBS , 0.02% Na ₂ S ₂ O ₃ , 1 mg BSA and 50% glycerol.	
Immunogen	A synthetic peptide corresponding to a sequence in the middle region of human CD90/Thy1.	
concentration	500 ug/ml	
Purification	Immunogen affinity purified.	
Observed MW	22-30KD	
Dilution Ratios	Western blot (WB): 1:500-2000 Immunohistochemistry in paraffin section (IHC): 1:50-400 (Boiling the paraffin sections in 10mM citrate buffer,pH6.0,or PH8.0 EDTA repair liquid for 20 mins is required for the staining of formalin/paraffin sections.) Optimal working dilutions must be determined by end user.	

Storage

12 months from date of receipt, -20°C as supplied. 6 months 2 to 8°C after reconstitution. Avoid repeated freezing and thawing.

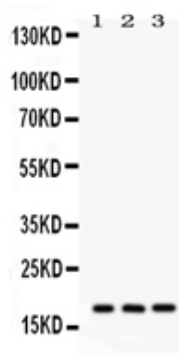
Background Information

CD90(Cluster of Differentiation 90) or Thy-1 is a 25-37 kDa heavily N-glycosylated, glycosphosphatidylinositol(GPI) anchored conserved cell surface protein with a single V-like immunoglobulin domain, originally discovered as a thymocyte antigen. The CD90 gene is mapped to 11q23.3. Thy-1 can be used as a marker for a variety of stem cells and for the axonal processes of mature neurons. Structural study of Thy-1 lead to the foundation of the Immunoglobulin superfamily, of which it is the smallest member, and led to the first biochemical description and characterization of a vertebrate GPI anchor.

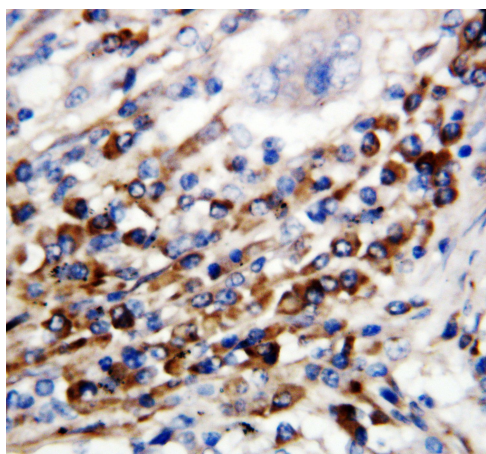
Reference

Anti-CD90/THY1 Antibody被引用在1文献中。

Selected Validation Data



CD90(BA3391)(MW:18KD)Hela, Jurkat, HT1080细胞裂解, 免疫印迹分析.



CD90(BA3391)人肺癌标本, 石蜡切片, SABC法, DAB显色.