

Basic Information

Product Name	Anti-CD68 Antibody	
Gene Name	CD68	
Source	Rabbit	
Isotype	IgG	
Species Reactivity	mouse, rat	
Tested Application	WB, IHC, IF, IHC-F	
Contents	500 ug/ml antibody with PBS , 0.02% NaN ₃ , 1 mg BSA and 50% glycerol.	
Immunogen	A synthetic peptide corresponding to a sequence in the middle region of mouse CD68(312-326aa AFCITRRRQSTYQPL), different from the related rat sequence by one amino acid.	
concentration	500 ug/ml	
Purification	Immunogen affinity purified.	
Observed MW	100KD	
Dilution Ratios	Western blot (WB): 1:500-2000 Immunohistochemistry in paraffin section (IHC): 1:50-400 Immunohistochemistry in frozen section: 1:50-400 Immunofluorescence (IF): 1:50-400 (Boiling the paraffin sections in 10mM citrate buffer, pH6.0, or PH8.0 EDTA repair liquid for 20 mins is required for the staining of formalin/paraffin sections.) Optimal working dilutions must be determined by end user.	

Storage

12 months from date of receipt, -20°C as supplied. 6 months 2 to 8°C after reconstitution. Avoid repeated freezing and thawing.

Background Information

CD68, cluster of differentiation, is a 110-kD transmembrane glycoprotein that is highly expressed by human monocytes and tissue macrophages. CD68 is a member of a family of hematopoietic mucin-like molecules that includes leukosialin/CD43 and stem cell antigen CD34. The CD68 gene is mapped to 17p13.1. Immunohistochemistry can be used to identify the presence of CD68, which is found in the cytoplasmic granules of a range of different blood cells. It is particularly useful as a marker for the various cells of the macrophage lineage, including monocytes, histiocytes, giant cells, Kupffer cells, and osteoclasts. This allows it to be used to distinguish diseases of otherwise similar appearance, such as the monocyte/macrophage and lymphoid forms of leukaemia (the latter being CD68 negative). Its presence in macrophages also makes it useful in diagnosing conditions related to proliferation or abnormality of these cells, such as malignant histiocytosis, histiocytic lymphoma, and Gaucher's disease.

Reference

Anti-CD68 Antibody 被引用在62文献中。

Selected Validation Data

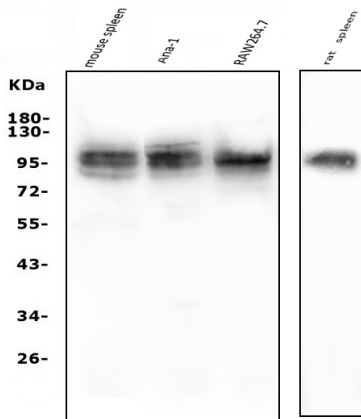


Figure 1. Western blot analysis of anti-CD68 antibody (BA3638). The sample well of each lane was loaded with 50ug of sample under reducing conditions. Lane 1: Mouse spleen Tissue Lysate, Lane 2: Ana-1 whole cell Lysate, Lane 3: RAW264.7 whole cell lysates, Lane 4: Rat spleen Tissue lysates, Use rabbit anti-CD68 1:1000, probed with a goat anti-rabbit IgG-HRP secondary antibody. The signal is developed using an Enhanced Chemiluminescent detection (ECL) kit (Catalog # EK1002). A specific band was detected for CD68 at approximately 100KD. The expected band size for CD68 is at 36KD.

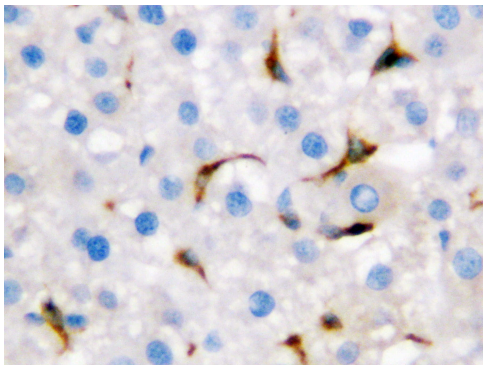


Figure 2. IHC analysis of CD68 using anti- CD68 antibody (BA3638). CD68 was detected in paraffin-embedded section of rat liver tissues. Heat mediated antigen retrieval was performed in citrate buffer (pH6, epitope retrieval solution) for 20 mins. The tissue section was blocked with 10% goat serum. The tissue section was then incubated with 1µg/ml rabbit anti- CD68 Antibody (BA3638) overnight at 4°C. Biotinylated goat anti-rabbit IgG was used as secondary antibody and incubated for 30 minutes at 37°C. The tissue section was developed using Streptavidin-Biotin-Complex (SABC)(Catalog # SA1022) with DAB as the chromogen.

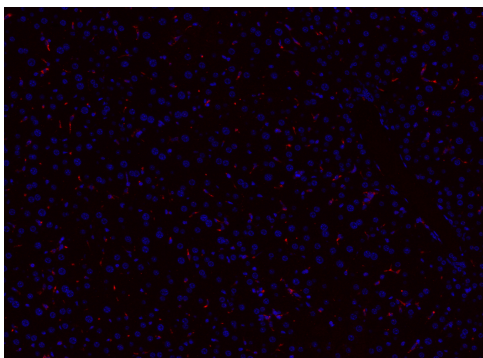


Figure 5. IF analysis of CD68 using anti- CD68 antibody (BA3638). CD68 was detected in paraffin-embedded section of rat liver tissues. Heat mediated antigen retrieval was performed in citrate buffer (pH6, epitope retrieval solution) for 20 mins. The tissue section was blocked with 10% goat serum. The tissue section was then incubated with 1µg/mL rabbit anti- CD68 Antibody (BA3638) overnight at 4°C. Cy3 Conjugated Goat Anti-Rabbit IgG (BA1032) was used as secondary antibody at 1:100 dilution and incubated for 30 minutes at 37°C. The section was counterstained with DAPI. Visualize using a fluorescence microscope and filter sets appropriate for the label used.

Product datasheet

Anti-CD68 Antibody

Catalog Number: **BA3638**

BOSTER

antibody and ELISA experts

BOSTER BIOLOGICAL TECHNOLOGY

Special NO.1, International Enterprise Center,
2nd Guanshan Road, Wuhan, China

Web: www.boster.com.cn **Phone:** +86 027-67845390 **Fax:** +86 027-67845390 **Email:** boster@boster.com.cn

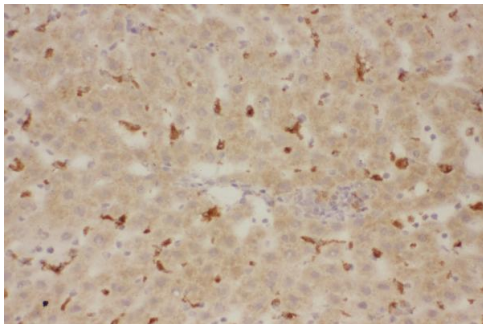


Figure 8. IHC analysis of CD68 using anti-CD68 antibody (BA3638). CD68 was detected in frozen section of rat liver tissue. The tissue section was developed using HRP Conjugated Rabbit IgG Super Vision Assay Kit (Catalog # SV0002) with DAB (Catalog # AR1022) as the chromogen.