

Basic Information

Product Name	Anti-CCL1 Antibody
Gene Name	CCL1
Source	Rabbit
Isotype	IgG
Species Reactivity	human
Tested Application	WB
Contents	500 ug/ml antibody with PBS , 0.02% Na ₂ S ₂ O ₃ , 1 mg BSA and 50% glycerol.
Immunogen	A synthetic peptide corresponding to a sequence at the C-terminus of human I-309(80-96aa WVQRHRKMLRHCPSKRK).
concentration	500 ug/ml
Purification	Immunogen affinity purified.
Observed MW	11KD
Dilution Ratios	Western blot(WB):1:500-2000

Storage

12 months from date of receipt, -20°C as supplied. 6 months 2 to 8°C after reconstitution. Avoid repeated freezing and thawing.

Background Information

CCL1, Chemokine(C-C motif) ligand 1, is one of several cytokine genes clustered on the q-arm of chromosome 17. Cytokines are a family of secreted proteins involved in immunoregulatory and inflammatory processes. The protein encoded by this gene is structurally related to the CXC subfamily of cytokines. Members of this subfamily are characterized by two cysteines separated by a single amino acid. This cytokine is secreted by activated T cells and displays chemotactic activity for monocytes but not for neutrophils. It binds to the chemokine receptor CCR8.

Selected Validation Data

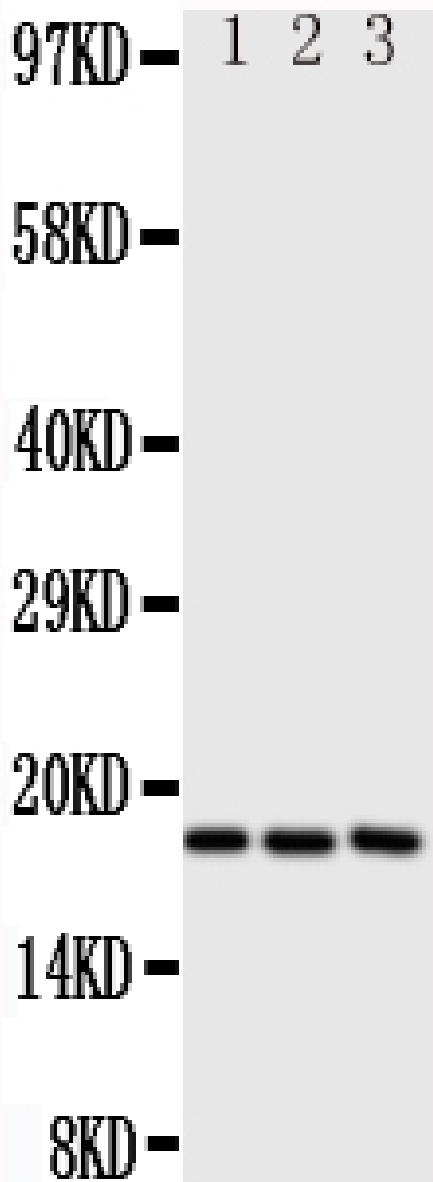


Figure 1. Western blot analysis of anti- CCL1 antibody (BA3642-2).The sample well of each lane was loaded with 50ug of sample under reducing conditions.Lane 1: SCG Whole Cell Lysates, Lane 2: COLO320 Whole Cell Lysates,Lane 3: JURKAT Whole Cell Lysates. Use rabbit anti- CCL1 1:1000, probed with a goat anti-rabbit IgG-HRP secondary antibody. The signal is developed using an Enhanced Chemiluminescent detection (ECL) kit (Catalog # EK1002). A specific band was detected for CCL1 at approximately 18KD. The expected band size for CCL1 is at 11KD.