

Basic Information

Product Name	Anti-IDO1 Antibody
Gene Name	IDO1
Source	Rabbit
Isotype	IgG
Species Reactivity	human
Tested Application	WB
Contents	500 ug/ml antibody with PBS , 0.02% Na ₂ S ₂ O ₃ , 1 mg BSA and 50% glycerol.
Immunogen	A synthetic peptide corresponding to a sequence at the N-terminus of human IDO1(1-20aa MAHAMENSWTISKEYHIDEE).
concentration	500 ug/ml
Purification	Immunogen affinity purified.
Observed MW	45KD
Dilution Ratios	Western blot(WB):1:500-2000

Storage

12 months from date of receipt, -20°C as supplied. 6 months 2 to 8°C after reconstitution. Avoid repeated freezing and thawing.

Background Information

IDO1(INDOLEAMINE 2,3-DIOXYGENASE), INDO or IDO, is an immunomodulatory enzyme produced by some alternatively activated macrophages and other immunoregulatory cells. This enzyme catalyzes the degradation of the essential amino acid L-tryptophan to N-formyl-kynurenine. By fluorescence in situ hybridization, the assignment is narrowed to chromosome 8p12-p11. INDO Interferon-gamma has an antiproliferative effect on many tumor cells and inhibits intracellular pathogens such as Toxoplasma and chlamydia, at least partly because of the induction of indoleamine 2,3-dioxygenase. During inflammation, IDO is upregulated in dendritic cells and phagocytes by proinflammatory stimuli, most notably IFNG, and the enzyme then uses superoxide as a 'cofactor' for oxidative cleavage of the indole ring of tryptophan, yielding an intermediate that deformylates to L-kynurenine.

Selected Validation Data

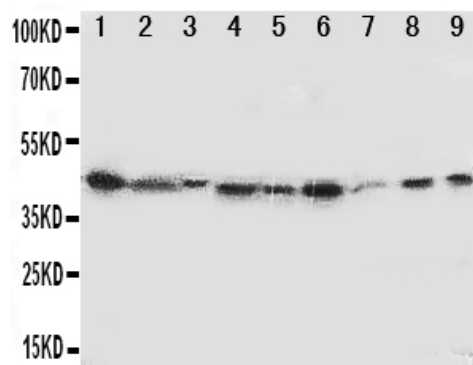


Figure 1. Western blot analysis of Anti-IDO1 antibody (BA3659-2). The sample well of each lane was loaded with 50ug of sample under reducing conditions. Lane 1: SMMC whole cell lysates, Lane 2: A549 whole cell lysates, Lane 3: Human placenta tissue lysate, Lane 4: SW620 whole cell lysates, Lane 5: U87 whole cell lysates, Lane 6: 293T whole cell lysates, Lane 7: A431 whole cell lysates, Lane 8: HELA whole cell lysates, Lane 9: COLO320 whole cell lysates, Use rabbit Anti-IDO1 1:1000, probed with a goat Anti-rabbit IgG-HRP secondary antibody. The signal is developed using an Enhanced Chemiluminescent detection (ECL) kit (Catalog # EK1002). A specific band was detected for IDO1 at approximately 45KD. The expected band size for IDO1 is at 45KD.