

Basic Information

Product Name	Anti-PRG2 Antibody	
Gene Name	PRG2	
Source	Rabbit	
Isotype	IgG	
Species Reactivity	human	
Tested Application	WB, IHC	
Contents	500 ug/ml antibody with PBS , 0.02% NaN3 , 1 mg BSA and 50% glycerol.	
Immunogen	A synthetic peptide	
concentration	500 ug/ml	
Purification	Immunogen affinity purified.	
Observed MW	24KD	
Dilution Ratios	Western blot(WB): 1:500-2000 Immunohistochemistry in paraffin section (IHC): 1:50-400 (Boiling the paraffin sections in 10mM citrate buffer,pH6.0,or PH8.0 EDTA repair liquid for 20 mins is required for the staining of formalin/paraffin sections.) Optimal working dilutions must be determined by end user.	

Storage

12 months from date of receipt, -20°C as supplied. 6 months 2 to 8°C after reconstitution. Avoid repeated freezing and thawing.

Background Information

The protein encoded by this gene is the predominant constituent of the crystalline core of the eosinophil granule. High levels of the proform of this protein are also present in placenta and pregnancy serum, where it exists as a complex with several other proteins including pregnancy-associated plasma protein A (PAPPA), angiotensinogen (AGT), and C3dg. This protein may be involved in antiparasitic defense mechanisms as a cytotoxin and helminthotoxin, and in immune hypersensitivity reactions. It is directly implicated in epithelial cell damage, exfoliation, and bronchospasm in allergic diseases. Alternatively spliced transcript variants encoding different isoforms have been found for this gene.

Selected Validation Data

Product datasheet

Anti-PRG2 Antibody

Catalog Number: **BA3806**

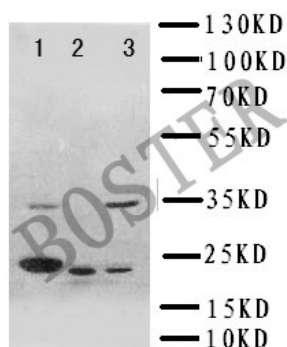
BOSTER

antibody and ELISA experts

BOSTER BIOLOGICAL TECHNOLOGY

Special NO.1, International Enterprise Center,
2nd Guanshan Road, Wuhan, China

Web: www.boster.com.cn **Phone:** +86 027-67845390 **Fax:** +86 027-67845390 **Email:** boster@boster.com.cn



PRG2(BA3806)(MW:24KD)hepa, cem, hela细胞裂解, 免疫印迹分析。