

Basic Information

Product Name	Anti-B23/NPM1 Antibody	
Gene Name	NPM1	
Source	Rabbit	
Isotype	IgG	
Species Reactivity	human, mouse, rat	
Tested Application	WB, IHC, ICC, ICC/IF	
Contents	500 ug/ml antibody with PBS , 0.02% NaN3 , 1 mg BSA and 50% glycerol.	
Immunogen	A synthetic peptide corresponding to a sequence at the N-terminus of human Nucleophosmin(22-41aa ELKADKDYHFKVDNDENEHQ), identical to the related rat and mouse sequences.	
concentration	500 ug/ml	
Purification	Immunogen affinity purified.	
Observed MW	38-40KD	
Dilution Ratios	Western blot(WB): 1:500-2000 Immunohistochemistry in paraffin section (IHC): 1:50-400 Immunocytochemistry in fixed cells(ICC): 1:50-400 Immunocytochemistry/Immunofluorescence(ICC/IF): 1:50-400 (Boiling the paraffin sections in 10mM citrate buffer,pH6.0,or PH8.0 EDTA repair liquid for 20 mins is required for the staining of formalin/paraffin sections.) Optimal working dilutions must be determined by end user.	

Storage

12 months from date of receipt, -20°C as supplied. 6 months 2 to 8°C after reconstitution. Avoid repeated freezing and thawing.

Background Information

NPM1(Nucleophosmin/Nucleoplasmin family, member1), also known as NPM, nucleolar phosphoprotein B23 or numatrin, is a protein that in humans is encoded by the NPM1 gene. The NPM1 gene maps to chromosome 5q35. Chan et al.(1989) found that nucleophosmin is a nucleolar phosphoprotein that is more abundant in tumor cells than in normal resting cells. Stimulation of the growth of normal cells, e.g., mitogen activation of B lymphocytes, was accompanied by an increase in nucleophosmin protein level. They stated that nucleophosmin is likely involved in the assembly of ribosomal proteins into ribosomes. Electron microscopic study indicated that nucleophosmin is concentrated in the granular region of the nucleolus, where ribosome assembly occurs.

Selected Validation Data

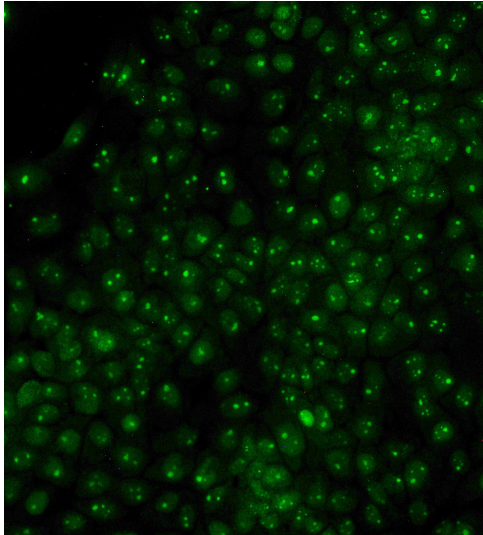


Figure 5. ICC analysis using anti-NPM1 antibody (BA3863). was detected in immersion fixed A431 cell line. Cells were stained using the DyLight488-conjugated Anti-rabbit IgG Secondary Antibody (green)(Catalog # BA1127) .