

## Basic Information

Product Name	Anti-IL6 Antibody	
Gene Name	IL6	
Source	Rabbit	
Isotype	IgG	
Species Reactivity	mouse, rat	
Tested Application	WB, IHC	
Contents	500 ug/ml antibody with PBS , 0.02% Na <sub>2</sub> S <sub>2</sub> O <sub>3</sub> , 1 mg BSA and 50% glycerol.	
Immunogen	A synthetic peptide corresponding to a sequence at the C-terminus of rat IL6(195-211aa KALEEFLKVTMRSTRQT), different from the related mouse sequence by two amino acids.	
concentration	500 ug/ml	
Purification	Immunogen affinity purified.	
Observed MW	28KD	
Dilution Ratios	Western blot(WB): 1:500-2000 Immunohistochemistry in paraffin section (IHC): 1:50-400 (Boiling the paraffin sections in 10mM citrate buffer,pH6.0,or PH8.0 EDTA repair liquid for 20 mins is required for the staining of formalin/paraffin sections.) Optimal working dilutions must be determined by end user.	

## Storage

12 months from date of receipt, -20°C as supplied. 6 months 2 to 8°C after reconstitution. Avoid repeated freezing and thawing.

## Background Information

Interleukin-6(IL-6) is a protein that in humans is encoded by the IL6 gene. IL-6 is an interleukin that acts as both a pro-inflammatory and anti-inflammatory cytokine. It is secreted by T cells and macrophages to stimulate immune response to trauma, especially burns or other tissue damage leading to inflammation. IL-6 is one of the most important mediators of fever and of the acute phase response. IL-6 is also essential for hybridoma growth and is found in many supplemental cloning media such as briclone. Bowcock et al.(1988) assigned the IL6 gene to chromosome 7p21. By in situ hybridization and Southern blot analysis of mouse-human hybrid cell lines, Sutherland et al.(1988) mapped the IL6 gene to chromosome 7p15.

## Reference

Anti-IL6 Antibody被引用在9文献中。

## Selected Validation Data

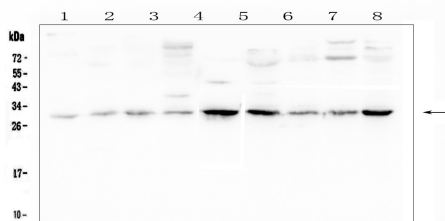


Figure 1. Western blot analysis of IL6 expression in (1) mouse smooth muscle tissue lysate; (2) mouse heart tissue lysate; (3) mouse lung tissue lysate; (4) mouse brain tissue lysate; (5) mouse small intestine tissue lysate; (6) mouse HEPA1-6 cell lysate; (7) mouse NIH3T3 cell lysate; (8) mouse SP20 cell lysate.

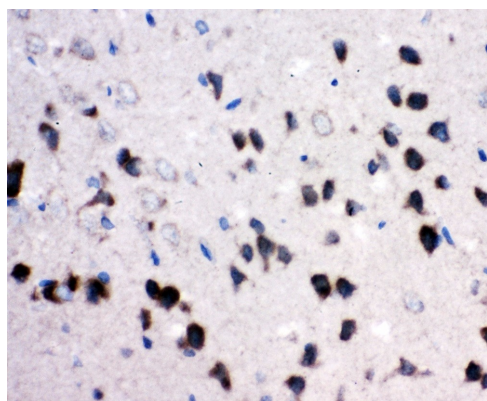


Figure 3. IHC analysis using anti-IL6 antibody (BA4339). detected in paraffin-embedded section of Human Lung Cancer tissue. Biotinylated goat anti-rabbit IgG was used as secondary antibody. The tissue section was developed using Streptavidin-Biotin-Complex (SABC) (Catalog # SA1022) with DAB as the chromogen.