

Basic Information

Product Name	Anti-TNF Beta/LTA Antibody
Gene Name	LTA
Source	Rabbit
Isotype	IgG
Species Reactivity	human
Tested Application	WB
Contents	500 ug/ml antibody with PBS , 0.02% NaN3 , 1 mg BSA and 50% glycerol.
Immunogen	A synthetic peptide corresponding to a sequence in the middle region of human TNF beta(73-88aa QNSLLWRANTDRAFL), different from the related mouse sequence by one amino acid.
concentration	500 ug/ml
Purification	Immunogen affinity purified.
Observed MW	22KD
Dilution Ratios	Western blot(WB):1:500-2000

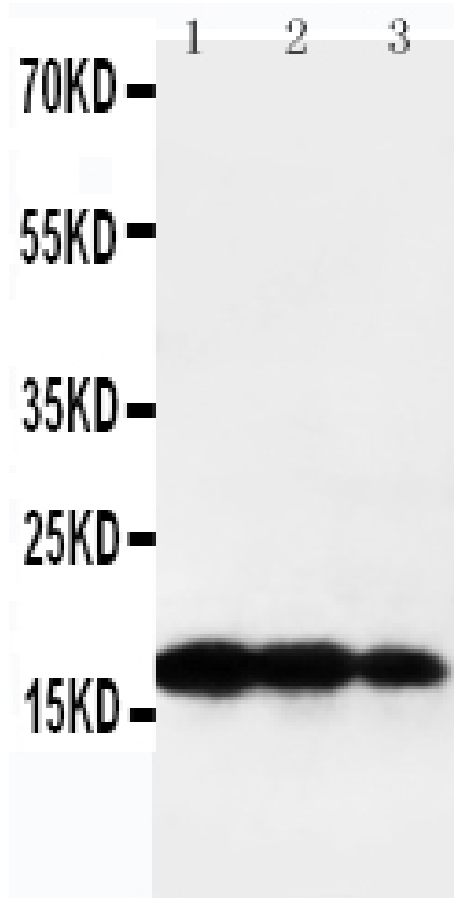
Storage

12 months from date of receipt, -20°C as supplied. 6 months 2 to 8°C after reconstitution. Avoid repeated freezing and thawing.

Background Information

Lymphotoxin(previously known as tumor necrosis factor-beta) is a lymphokine cytokine. It is a protein that is produced by Th1 type T-cells and induces vascular endothelial cells to change their surface adhesion molecules to allow phagocytic cells to bind to them. Lymphotoxin is homologous to Tumor Necrosis Factor beta, but secreted by T-cells. It is paracrine due to the small amounts produced. The effects are similar to TNF-alpha, but TNF-beta is also important for the development of lymphoid organs. Nedwin et al.(1985) found that TNFA and TNFB are closely linked on chromosome 6. Study of hybrid cells made with rearranged human chromosome 6 showed that both TNFA and TNFB map to the 6p23-q12 segment.

Selected Validation Data



Lane 1: Recombinant Human TNF β Protein 10ng

Lane 2: Recombinant Human TNF β Protein 5ng

Lane 3: Recombinant Human TNF β Protein 2.5ng