

Basic Information

Product Name	Anti-BrdU Antibody	
Source	Mouse	
Isotype	IgG	
Species Reactivity	human,mouse,rat,rabbit	
Tested Application	IHC	
Contents	200ug/ml antibody with PBS , 0.02% NaN3 , 1mg BSA and 50% glycerol.	
Immunogen	A synthetic peptide	
Purification	Immunogen affinity purified.	
Dilution Ratios	Western blot (WB): 1:500-2000 Immunohistochemistry in paraffin section (IHC): 1:50-400 Immunocytochemistry in fixed cells (ICC): 1:50-400 Immunohistochemistry in frozen section (IHC-F): 1:50-400 (Boiling the paraffin sections in 10mM citrate buffer,pH6.0,or PH8.0 EDTA repair liquid for 20 mins is required for the staining of formalin/paraffin sections.) Optimal working dilutions must be determined by end user.	

Storage

12 months from date of receipt, -20°C as supplied. 6 months 2 to 8°C after reconstitution. Avoid repeated freezing and thawing.

Reference

Anti-BrdU Antibody被引用在49文献中。

Selected Validation Data

Product datasheet

Anti-BrdU Antibody

Catalog Number: **BM0201**

BOSTER

antibody and ELISA experts

BOSTER BIOLOGICAL TECHNOLOGY

Special NO.1, International Enterprise Center,
2nd Guanshan Road, Wuhan, China

Web: www.boster.com.cn **Phone:** +86 027-67845390 **Fax:** +86 027-67845390 **Email:** boster@boster.com.cn

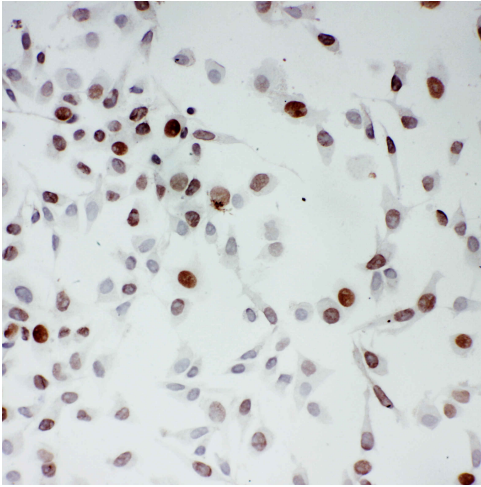


Figure 1. IHC analysis using anti-BrdU antibody (BM0201). detected in paraffin-embedded section of HELA cells. Biotinylated goat anti-mouse IgG was used as secondary antibody. The tissue section was developed using Streptavidin-Biotin-Complex (SABC) (Catalog # SA1022) with DAB as the chromogen.