

Basic Information

Product Name	Anti-Beta Actin/ACTB Antibody	
Gene Name	ACTB	
Source	Mouse	
Isotype	IgG1	
Species Reactivity	human, mouse, rat, pig, monkey, rabbit, chicken	
Tested Application	WB, IHC	
Contents	200ug/ml antibody with PBS , 0.02% NaN ₃ , 1mg BSA	
Immunogen	slightly modified beta-cytoplasmic actin N-terminal peptide, Ac-Asp-Asp-Asp-Ile-Ala-Ala-Leu-Val-Ile-Asp-Asn-Gly-Ser-Gly-Lys, conjugated to KLH.	
Purification	Ascites	
Observed MW	42KD(不适用于心肌样本的检测)	
Dilution Ratios	Western blot (WB):	1:5000-20000
	Immunohistochemistry in paraffin section (IHC):	1:50-400
	(Boiling the paraffin sections in 10mM citrate buffer,pH6.0,or PH8.0 EDTA repair liquid for 20 mins is required for the staining of formalin/paraffin sections.) Optimal working dilutions must be determined by end user.	

Storage

12 months from date of receipt, -20°C as supplied. 6 months 2 to 8°C after reconstitution. Avoid repeated freezing and thawing.

Background Information

The primary site of action of cytochalasin B on cell motility processes is beta-actin. Habets et al.(1992) generated hybrids that harbor only specific regions of human chromosome 7 and assigned the ACTB locus to 7p15-p12. ACTB and the other assigned beta-actin-related sequences are dispersed over at least four different chromosomes including one locus assigned to the X chromosome. A mutation of beta-actin that alters depolymerization dynamics is associated with autosomal dominant developmental malformations, deafness, and dystonia.

Reference

Anti-Beta Actin/ACTB Antibody被引用在774文献中。

Selected Validation Data

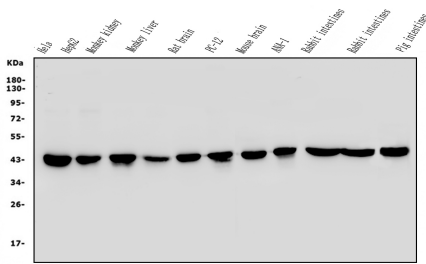


Figure 1. Western blot analysis of anti- β -Actin antibody (BM0627).The sample well of each lane was loaded with 50ug of sample under reducing conditions.Lane 1: Human HELA whole cell lysates,Lane 2: Human HepG2 whole cell lysates,Lane 3: Monkey kidney tissue lysates,Lane 4: Monkey liver tissue lysates,Lane 5: Rat brain tissue lysates,Lane 6: Rat PC-12 whole cell lysates,Lane 7: Mouse brain tissue lysates,Lane 8: Mouse ANA-1 whole cell lysates,Lane 9: Rabbit intestines tissue lysates,Lane 10: Rabbit intestines tissue lysates,Lane 11: Pig intestines tissue lysates.Use rabbit anti- β -Actin 1:5000, probed with a goat anti-mouse IgG-HRP secondary antibody. The signal is developed using an Enhanced Chemiluminescent detection (ECL) kit (Catalog # EK1002). A specific band was detected for β -Actin at approximately 42KD. The expected band size for β -Actin is at 42KD.

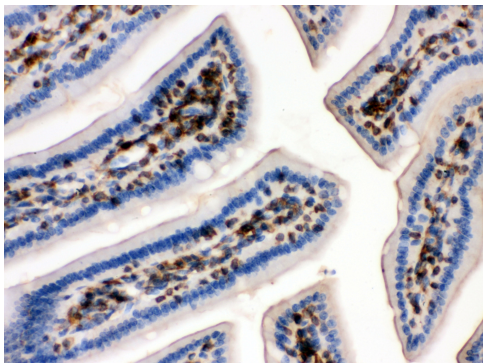


Figure 2.IHC analysis using anti- β -Actin antibody (BM0627).detected in paraffin-embedded section of Mouse Intestine tissue. Biotinylated goat anti-mouse IgG was used as secondary antibody. The tissue section was developed using Streptavidin-Biotin-Complex (SABC) (Catalog # SA1021) with DAB as the chromogen.