

Basic Information

Product Name	Anti-GAPDH Antibody (Clone#5A12)
Gene Name	GAPDH
Source	Mouse
Isotype	IgG1
Species Reactivity	human,mouse,rat,monkey,zebrafish,chicken,rabbit,pig
Tested Application	WB,ICC/IF
Contents	200ug/ml antibody with PBS , 0.02% NaN3 , 1mg BSA
Immunogen	A synthetic peptide corresponding to a sequence
Purification	protein G purified.
Observed MW	36KD
Dilution Ratios	Western blot (WB): 1:10000-200000 Immunocytochemistry/Immunofluorescence(ICC/IF):1:200-500

Storage

12 months from date of receipt, -20°C as supplied. 6 months 2 to 8°C after reconstitution. Avoid repeated freezing and thawing.

Background Information

The product of this gene catalyzes an important energy-yielding step in carbohydrate metabolism, the reversible oxidative phosphorylation of glyceraldehyde-3-phosphate in the presence of inorganic phosphate and nicotinamide adenine dinucleotide (NAD). The enzyme exists as a tetramer of identical chains. Many pseudogenes similar to this locus are present in the human genome. Two transcript variants encoding different isoforms have been found for this gene.

Reference

Anti-GAPDH Antibody (Clone#5A12)被引用在275文献中。

Selected Validation Data

Product datasheet

Anti-GAPDH Antibody (Clone#5A12)

Catalog Number: **BM1623**

BOSTER

antibody and ELISA experts

BOSTER BIOLOGICAL TECHNOLOGY

Special NO.1, International Enterprise Center,
2nd Guanshan Road, Wuhan, China

Web: www.boster.com.cn **Phone:** +86 027-67845390 **Fax:** +86 027-67845390 **Email:** boster@boster.com.cn

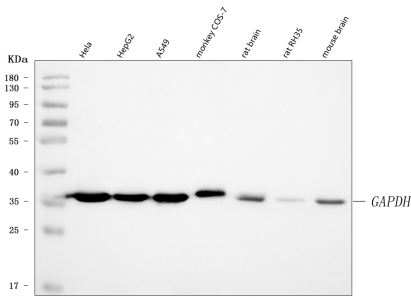


Figure 1. Western blot analysis of anti- GAPDH antibody (BM1623). The sample well of each lane was loaded with 30ug of sample under reducing conditions.

Lane 1: human HeLa whole cell lysates,

Lane 2: human HepG2 whole cell lysates,

Lane 3: human A549 whole cell lysates,

Lane 4: monkey COS-7 whole cell lysates,

Lane 5: rat brain tissue lysates,

Lane 6: rat RH-35 whole cell lysates,

Lane 7: mouse brain tissue lysates.

Use mouse anti- GAPDH 1:1000, probed with a goat anti- mouse IgG-HRP secondary antibody. The signal is developed using an Enhanced Chemiluminescent detection (ECL) kit (Catalog#EK1001).

A specific band was detected for GAPDH at approximately 36KD.

The expected band size for GAPDH is at 36KD.