

Basic Information

Product Name	Anti-Beta Actin/ACTB Antibody
Gene Name	ACTB
Source	Rabbit
Isotype	IgG
Species Reactivity	human,mouse,rat,monkey,zebrafish
Tested Application	WB
Contents	500 ug/ml antibody with PBS , 0.02% NaN3 , 1 mg BSA and 50% glycerol.
Immunogen	A synthesized peptide derived from human beta Actin
Purification	Immunogen affinity purified.
Observed MW	42KD
Dilution Ratios	Western blot (WB):1:2000-20000

Storage

12 months from date of receipt, -20°C as supplied. 6 months 2 to 8°C after reconstitution. Avoid repeated freezing and thawing.

Background Information

The primary site of action of cytochalasin B on cell motility processes is beta-actin. Habets et al.(1992) generated hybrids that harbor only specific regions of human chromosome 7 and assigned the ACTB locus to 7p15-p12. ACTB and the other assigned beta-actin-related sequences are dispersed over at least four different chromosomes including one locus assigned to the X chromosome. A mutation of beta-actin that alters depolymerization dynamics is associated with autosomal dominant developmental malformations, deafness, and dystonia.

Reference

Anti-Beta Actin/ACTB Antibody被引用在33文献中。

Selected Validation Data

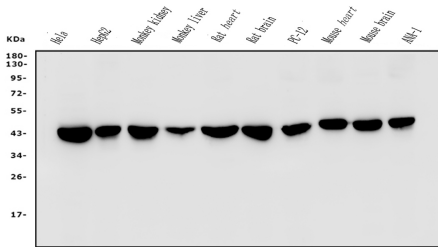


Figure 1. Western blot analysis of anti- β -Actin antibody (BM3873).The sample well of each lane was loaded with 50ug of sample under reducing conditions.Lane 1: Human HELA whole cell lysates,Lane 2: Human HepG2 whole cell lysates,Lane 3: Monkey kidney tissue lysates,Lane 4: Monkey liver tissue lysates,Lane 5: Rat heart tissue lysates,Lane 6: Rat brain tissue lysates,Lane 7: Rat PC-12 whole cell lysates,Lane 8: Mouse heart tissue lysates,Lane 9: Mouse brain tissue lysates,Lane 10: Mouse ANA-1 whole cell lysates.Use rabbit anti- β -Actin 1:3000, probed with a goat anti-rabbit IgG-HRP secondary antibody. The signal is developed using an Enhanced Chemiluminescent detection (ECL) kit (Catalog # EK1002). A specific band was detected for β -Actin at approximately 42KD. The expected band size for β -Actin is at 42KD.