

Basic Information

Product Name	Anti-Beta Tubulin/TUBB Antibody	
Gene Name	TUBB	
Source	Rabbit	
Isotype	IgG	
Species Reactivity	human,mouse,rat	
Tested Application	WB	
Contents	500 ug/ml;Rabbit IgG in phosphate buffered saline, pH 7.4, 150mM NaCl, 0.02% sodium azide and 50% glycerol.	
Immunogen	A synthesized peptide derived from human beta Tubulin	
Purification	Affinity-chromatography	
Observed MW	55KD	
Dilution Ratios	Western blot (WB):	1:1000-5000
	Immunohistochemistry in paraffin section (IHC):	1:20-100
	Immunocytochemistry/Immunofluorescence (ICC/IF):	1:20-100
	Flow cytometry (FCM):	1:20

Storage

12 months from date of receipt, -20°C as supplied. 6 months 2 to 8°C after reconstitution. Avoid repeated freezing and thawing.

Background Information

Tubulin beta chain is a protein that in humans is encoded by the TUBB gene. This gene encodes a beta tubulin protein. This protein forms a dimer with alpha tubulin and acts as a structural component of microtubules. Mutations in this gene cause cortical dysplasia,complex,with other brain malformations 6. Alternative splicing results in multiple splice variants. There are multiple pseudogenes for this gene on chromosomes 1,6,7,8,9,and 13.

Selected Validation Data

Product datasheet

Anti-Beta Tubulin/TUBB Antibody

Catalog Number: **BM3877**

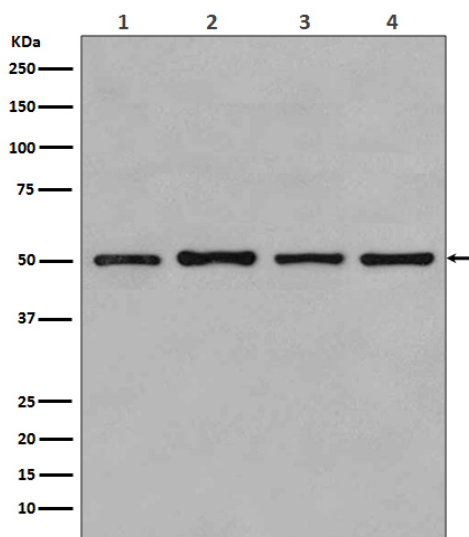
BOSTER

antibody and ELISA experts

BOSTER BIOLOGICAL TECHNOLOGY

Special NO.1, International Enterprise Center,
2nd Guanshan Road, Wuhan, China

Web: www.boster.com.cn **Phone:** +86 027-67845390 **Fax:** +86 027-67845390 **Email:** boster@boster.com.cn



Western blot analysis of beta Tubulin expression in HeLa cell lysates.