

Basic Information

Product Name	Anti-GFP Antibody
Gene Name	GFP
Source	Rabbit
Isotype	IgG
Species Reactivity	All species
Tested Application	WB, IHC, ICC/IF
Contents	500 ug/ml; Rabbit IgG in phosphate buffered saline, pH 7.4, 150mM NaCl, 0.02% sodium azide and 50% glycerol.
Immunogen	A synthesized peptide derived from green fluorescent protein
concentration	500 ug/ml
Purification	Affinity-chromatography
Observed MW	27KD
Dilution Ratios	Western blot (WB): 1:1000-5000 Immunohistochemistry in paraffin section (IHC): 1:20-100 Immunocytochemistry/Immunofluorescence (ICC/IF): 1:20-100

Storage

12 months from date of receipt, -20°C as supplied. 6 months 2 to 8°C after reconstitution. Avoid repeated freezing and thawing.

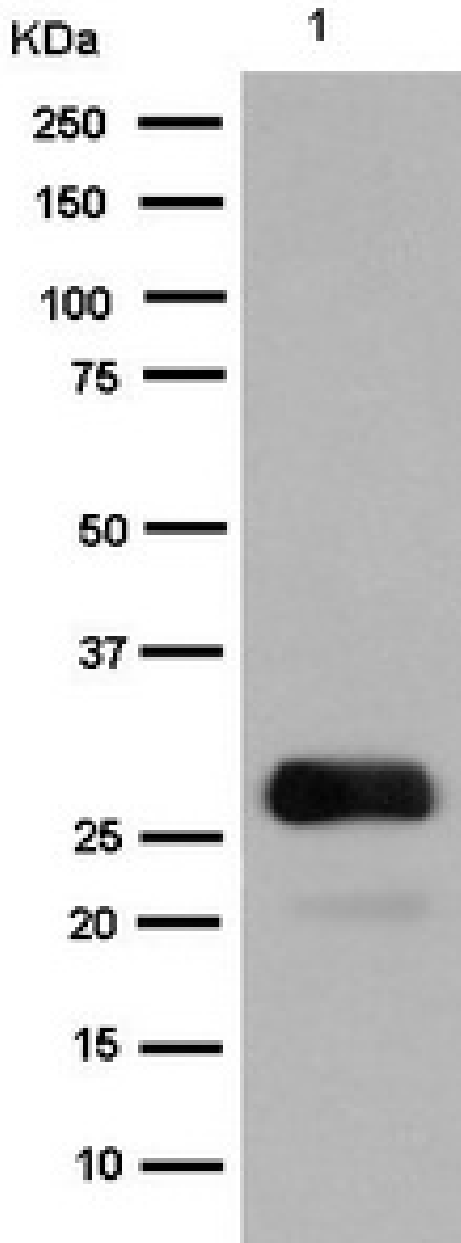
Background Information

Green fluorescent protein (GFP) has been engineered to produce a vast number of variously colored mutants, fusion proteins, and biosensors. Fluorescent proteins and its mutated allelic forms, blue, cyan and yellow have become a useful and ubiquitous tool for making chimeric proteins, where they function as a fluorescent protein tag. Typically they tolerate N- and C-terminal fusion to a broad variety of proteins.

Reference

Anti-GFP Antibody 被引用在 3 文献中。

Selected Validation Data



Western blot analysis of GFP expression in 293 cell lysate transfected with GFP.