

Basic Information

Product Name	Anti-Alpha Tubulin/TUBA1B Antibody	
Gene Name	TUBA1B	
Source	Rabbit	
Isotype	IgG	
Species Reactivity	human,mouse,rat	
Tested Application	WB, IHC	
Contents	500 ug/ml;Rabbit IgG in phosphate buffered saline, pH 7.4, 150mM NaCl, 0.02% sodium azide and 50% glycerol.	
Immunogen	A synthesized peptide derived from human alpha Tubulin	
Purification	Affinity-chromatography	
Observed MW	50KD	
Dilution Ratios	Western blot (WB):	1:1000-5000
	Immunohistochemistry in paraffin section (IHC):	1:20-100
	Immunocytochemistry/Immunofluorescence (ICC/IF):	1:20-100
	Immunoprecipitation:	1:20
	Flow cytometry (FCM):	1:20

Storage

12 months from date of receipt, -20°C as supplied. 6 months 2 to 8°C after reconstitution. Avoid repeated freezing and thawing.

Background Information

Alpha-tubulin(β -alpha-1) mRNA is expressed only in brain with a molecular weight of about 55,000. The 3-prime UTR of β -alpha-1 is more than 80% homologous to the UTR of the rat brain alpha-tubulin gene, IL-alpha-T1. β -alpha-1 encodes a predicted 451-amino acid protein that is 100% identical to the rat homolog and differs by only 2 and 3 amino acids from the pig and chicken homologs, respectively.

Reference

Anti-Alpha Tubulin/TUBA1B Antibody被引用在1文献中。

Selected Validation Data

Product datasheet

Anti-Alpha Tubulin/TUBA1B Antibody

Catalog Number: **BM3885**

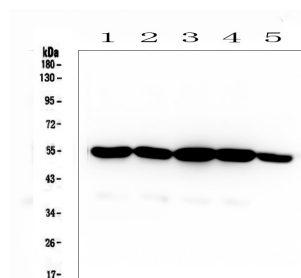
BOSTER

antibody and ELISA experts

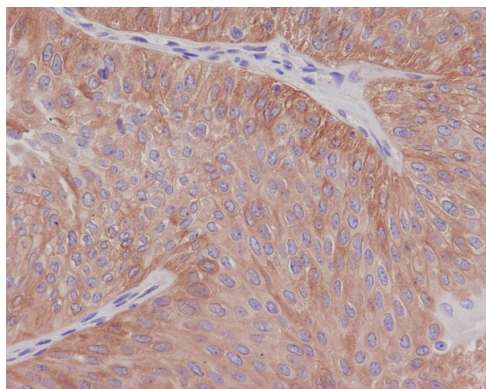
BOSTER BIOLOGICAL TECHNOLOGY

Special NO.1, International Enterprise Center,
2nd Guanshan Road, Wuhan, China

Web: www.boster.com.cn **Phone:** +86 027-67845390 **Fax:** +86 027-67845390 **Email:** boster@boster.com.cn



alpha Tubulin(BM3885)(MW:55KD)大鼠脑, 大鼠脑, 小鼠脑, 小鼠脑组织, 人Hela细胞裂解, 免疫印迹分析。



Immunohistochemical analysis of paraffin-embedded human bladder, using alpha Tubulin Antibody.