

Basic Information

Product Name	Anti-GAPDH Antibody(HRP conjugated)
Gene Name	GAPDH
Source	Rabbit
Isotype	IgG
Species Reactivity	human,mouse,rat,monkey,zebrafish,chicken,fish
Tested Application	WB
Contents	500 ug/ml;Rabbit IgG in phosphate buffered saline, pH 7.4, 150mM NaCl, 0.02% sodium azide and 50% glycerol.
Immunogen	A synthesized peptide derived from human GAPDH(HRP conjugated)
Purification	Affinity-chromatography
Observed MW	36KD
Dilution Ratios	Western blot (WB):1:1000-5000

Storage

12 months from date of receipt, -20°C as supplied. 6 months 2 to 8°C after reconstitution. Avoid repeated freezing and thawing.

Background Information

Glyceraldehyde 3 phosphate dehydrogenase (GAPDH) is well known as one of the key enzymes involved in glycolysis. GAPDH is constitutively abundant expressed in almost cell types at high levels, therefore antibodies against GAPDH are useful as loading controls for Western Blotting. Some pathology factors, such as hypoxia and diabetes, increased or decreased GAPDH expression in certain cell types.

Reference

Anti-GAPDH Antibody(HRP conjugated)被引用在7文献中。

Selected Validation Data

Product datasheet

Anti-GAPDH Antibody(HRP conjugated)

Catalog Number: **BM3896**

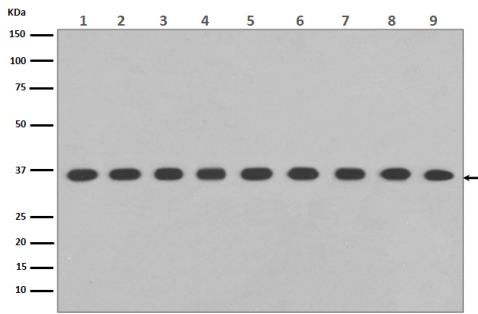
BOSTER

antibody and ELISA experts

BOSTER BIOLOGICAL TECHNOLOGY

Special NO.1, International Enterprise Center,
2nd Guanshan Road, Wuhan, China

Web: www.boster.com.cn **Phone:** +86 027-67845390 **Fax:** +86 027-67845390 **Email:** boster@boster.com.cn



Western blot analysis of GAPDH expression in (1) Jurkat cell lysate; (2) A375 cell lysate; (3) Human hippocampus lysate; (4) Human fetal liver lysate; (5) COS-1 cell lysate; (6) Raw264.7 cell lysate; (7) Mouse kidney lysate; (8) PC-12 cell lysate; (9) Rat brain lysate with GAPDH Antibody.