

Basic Information

Product Name	Anti-Beta Catenin/CTNNB1 Antibody	
Gene Name	CTNNB1	
Source	Rabbit	
Isotype	IgG	
Species Reactivity	human,mouse,rat	
Tested Application	WB	
Contents	500 ug/ml;Rabbit IgG in phosphate buffered saline, pH 7.4, 150mM NaCl, 0.02% sodium azide and 50% glycerol.	
Immunogen	A synthesized peptide derived from human beta Catenin	
concentration	500 ug/ml	
Purification	Affinity-chromatography	
Observed MW	95KD	
Dilution Ratios	Western blot (WB): 1:500-2000 Immunohistochemistry in paraffin section (IHC): 1:20-100 Immunocytochemistry/Immunofluorescence (ICC/IF): 1:20-100 Immunoprecipitation: 1:20	

Storage

12 months from date of receipt, -20°C as supplied. 6 months 2 to 8°C after reconstitution. Avoid repeated freezing and thawing.

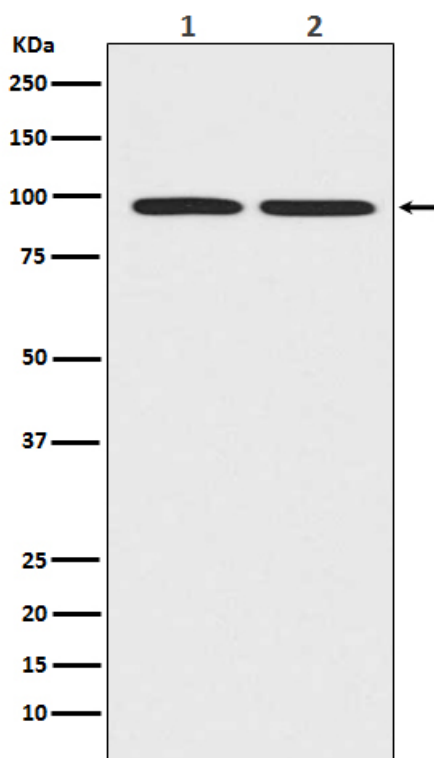
Background Information

Catenins are proteins found in complexes with cadherin cell adhesion molecules of animal cells. The first two catenins that were identified became known as alpha-catenin and beta-catenin. Alpha-catenin can bind to beta-catenin and can also bind actin. Beta-catenin binds the cytoplasmic domain of some cadherins. Beta-catenin is an adherens junction protein. It plays an important role in various aspects of liver biology including liver development(both embryonic and postnatal), liver regeneration following partial hepatectomy. HGF-induced hepatomegaly, liver zonation, and pathogenesis of liver cancer.

Reference

Anti-Beta Catenin/CTNNB1 Antibody 被引用在4文献中。

Selected Validation Data



Western blot analysis of beta catenin expression in (1) A431 cell lysates; (2) PC-12 cell lysates.