

## Basic Information

<b>Product Name</b>	Anti-ATP1A1 Antibody
<b>Gene Name</b>	ATP1A1
<b>Source</b>	Rabbit
<b>Isotype</b>	IgG
<b>Species Reactivity</b>	human,mouse,rat
<b>Tested Application</b>	WB
<b>Contents</b>	500 ug/ml;Rabbit IgG in phosphate buffered saline, pH 7.4, 150mM NaCl, 0.02% sodium azide and 50% glycerol.
<b>Immunogen</b>	A synthesized peptide derived from human Sodium Potassium ATPase
<b>Purification</b>	Affinity-chromatography
<b>Observed MW</b>	100KD
<b>Dilution Ratios</b>	Western blot (WB): 1:1000-5000 Immunohistochemistry in paraffin section (IHC):1:20-100 Flow cytometry (FCM): 1:20

## Storage

12 months from date of receipt, -20°C as supplied. 6 months 2 to 8°C after reconstitution. Avoid repeated freezing and thawing.

## Background Information

The protein encoded by this gene belongs to the family of P-type cation transport ATPases, and to the subfamily of Na<sup>+</sup>/K<sup>+</sup>-ATPases. Na<sup>+</sup>/K<sup>+</sup>-ATPase is an integral membrane protein responsible for establishing and maintaining the electrochemical gradients of Na and K ions across the plasma membrane. These gradients are essential for osmoregulation, for sodium-coupled transport of a variety of organic and inorganic molecules, and for electrical excitability of nerve and muscle. This enzyme is composed of two subunits, a large catalytic subunit (alpha) and a smaller glycoprotein subunit (beta). The catalytic subunit of Na<sup>+</sup>/K<sup>+</sup>-ATPase is encoded by multiple genes. This gene encodes an alpha 1 subunit. Multiple transcript variants encoding different isoforms have been found for this gene.

## Selected Validation Data

Product datasheet

## Anti-ATP1A1 Antibody

Catalog Number: **BM4048**

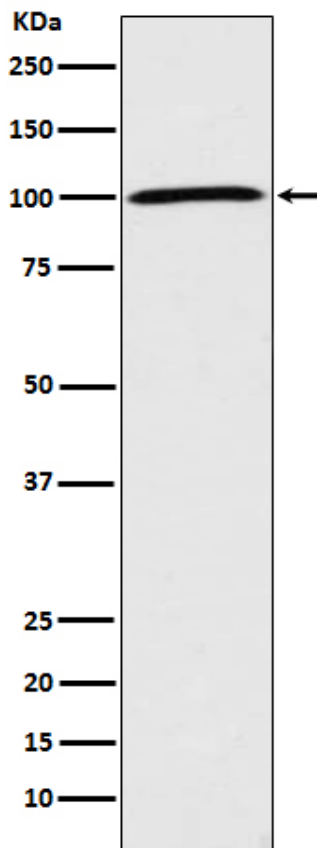
# BOSTER

antibody and ELISA experts

**BOSTER BIOLOGICAL TECHNOLOGY**

Special NO.1, International Enterprise Center,  
2nd Guanshan Road, Wuhan, China

**Web:** www.boster.com.cn **Phone:** +86 027-67845390 **Fax:** +86 027-67845390 **Email:** boster@boster.com.cn



Western blot analysis of Sodium Potassium ATPase expression in HeLa cell lysate.