

Basic Information

Product Name	Anti-P53/TP53 (Phospho-S392) Antibody	
Gene Name	TP53	
Source	Rabbit	
Isotype	IgG	
Species Reactivity	human, mouse, rat	
Tested Application	WB, IHC, ICC/IF, IP	
Contents	500 ug/ml; Rabbit IgG in phosphate buffered saline, pH 7.4, 150mM NaCl, 0.02% sodium azide and 50% glycerol.	
Immunogen	A synthesized peptide derived from human Phospho-p53 (S392)	
concentration	500 ug/ml	
Purification	Affinity-chromatography	
Observed MW	53KD	
Dilution Ratios	Western blot (WB): 1:500-2000 Immunohistochemistry in paraffin section (IHC): 1:20-100 Immunocytochemistry/Immunofluorescence (ICC/IF): 1:20-100 Immunoprecipitation: 1:20	

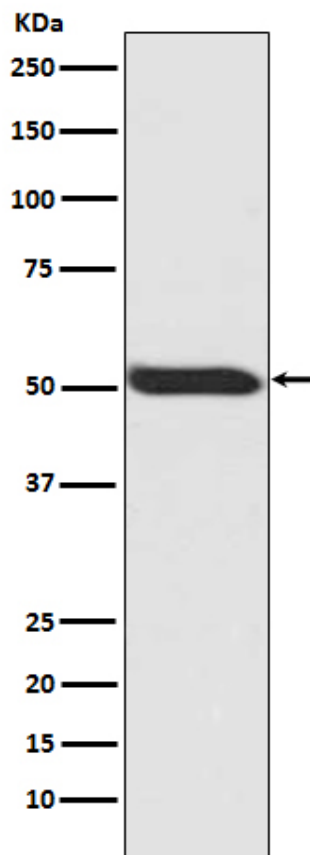
Storage

12 months from date of receipt, -20°C as supplied. 6 months 2 to 8°C after reconstitution. Avoid repeated freezing and thawing.

Background Information

The p53 tumor antigen is found in increased amounts in a wide variety of transformed cells. The protein is also detectable in many actively proliferating, nontransformed cells, but it is undetectable or present at low levels in resting cells. This protein induces cell cycle arrest or apoptosis in response to sublethal or severe DNA damage, respectively, by differential transcription of target genes and through transcription-independent apoptotic functions. The p53 protein contains 393 amino acids. Human p53 tumour antigen is located to band 17p13. p53 mutations are common in pancreatic cancer and are absent in chronic pancreatitis.

Selected Validation Data



Western blot analysis of Phospho-p53 (Ser392) expression in HEK293 whole cell lysate.