

Basic Information

Product Name	Anti-NGF beta/NGF Antibody	
Gene Name	NGF	
Source	Rabbit	
Isotype	IgG	
Species Reactivity	human,mouse,rat	
Tested Application	WB, IHC, ICC/IF	
Contents	500 ug/ml;Rabbit IgG in phosphate buffered saline, pH 7.4, 150mM NaCl, 0.02% sodium azide and 50% glycerol.	
Immunogen	A synthesized peptide derived from human NGF	
concentration	500 ug/ml	
Purification	Affinity-chromatography	
Observed MW	27-35KD	
Dilution Ratios	Western blot (WB): 1:500-2000 Immunohistochemistry in paraffin section (IHC): 1:20-100 Immunocytochemistry/Immunofluorescence (ICC/IF): 1:20-100	

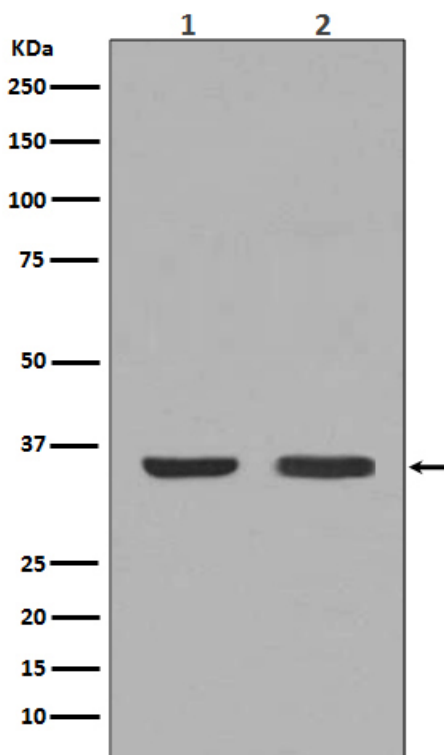
Storage

12 months from date of receipt, -20°C as supplied. 6 months 2 to 8°C after reconstitution. Avoid repeated freezing and thawing.

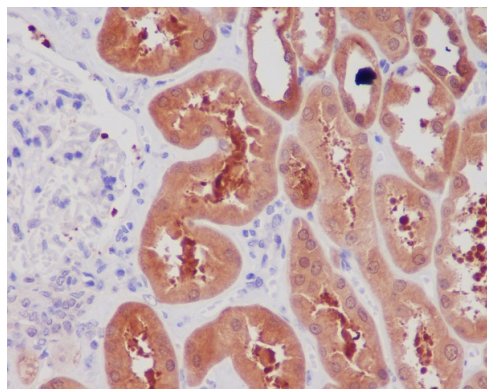
Background Information

Nerve growth factor (NGF) is a neurotrophic factor and neuropeptide primarily involved in the regulation of growth, maintenance, proliferation, and survival of certain target neurons. It is mapped to 1p13.2. This gene is a member of the NGF-beta family and encodes a secreted protein which homodimerizes and is incorporated into a larger complex. This protein has nerve growth stimulating activity and the complex is involved in the regulation of growth and the differentiation of sympathetic and certain sensory neurons. Mutations in this gene have been associated with hereditary sensory and autonomic neuropathy, type 5 (HSAN5), and dysregulation of this gene's expression is associated with allergic rhinitis.

Selected Validation Data



Western blot analysis of NGF expression in (1) Mouse thyroid lysate; (2) HeLa cell lysate.



Immunohistochemical analysis of paraffin-embedded human kidney, using NGF Antibody.