

## Basic Information

Product Name	Anti-Desmin/DES Antibody	
Gene Name	DES	
Source	Rabbit	
Isotype	IgG	
Species Reactivity	human, mouse, rat	
Tested Application	WB, IHC, ICC/IF	
Contents	500 ug/ml; Rabbit IgG in phosphate buffered saline, pH 7.4, 150mM NaCl, 0.02% sodium azide and 50% glycerol.	
Immunogen	A synthesized peptide derived from human Desmin	
concentration	500 ug/ml	
Purification	Affinity-chromatography	
Observed MW	54KD	
Dilution Ratios	Western blot (WB): 1:1000-5000 Immunohistochemistry in paraffin section (IHC): 1:20-100 Immunocytochemistry/Immunofluorescence (ICC/IF): 1:20-100	

## Storage

12 months from date of receipt, -20°C as supplied. 6 months 2 to 8°C after reconstitution. Avoid repeated freezing and thawing.

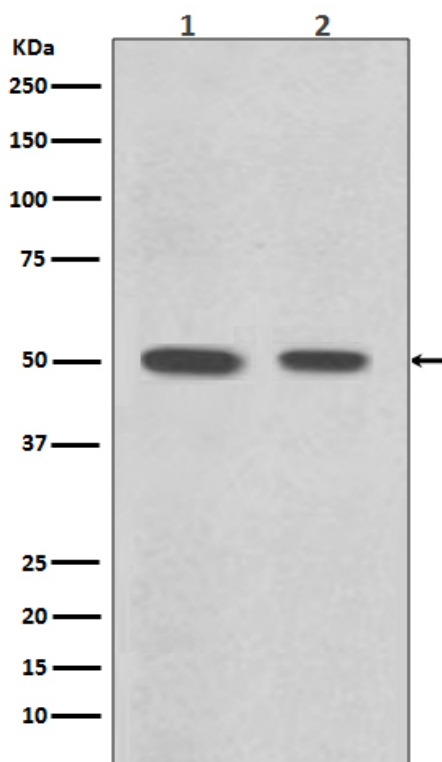
## Background Information

DES, also called desmin, is a protein that in humans is encoded by the DES gene, and this gene is mapped to 2q35. DES is the muscle-specific member of the intermediate filament (IF) protein family. It is one of the earliest myogenic markers, both in heart and somites, and is expressed in satellite stem cells and replicating myoblasts. DES is very important in muscle cell architecture and structure since it connects many components of the cytoplasm. It may also play an important role in mitochondria function. What's more, DES provides attachments between the terminal Z disc and membrane-associated proteins to form a force-transmitting system that parallels the thin filaments at myotendinous junctions.

## Reference

Anti-Desmin/DES Antibody被引用在5文献中。

## Selected Validation Data



Western blot analysis of Desmin expression in (1) Mouse heart tissue lysate; (2) Rat heart tissue lysate.