

Basic Information

Product Name	Anti-CAMTA3 Antibody	
Gene Name	CAMTA3	
Source	Rabbit	
Isotype	IgG	
Species Reactivity	human, mouse, rat	
Tested Application	WB, IHC, ICC/IF, IP, FCM	
Contents	500 ug/ml; Rabbit IgG in phosphate buffered saline, pH 7.4, 150mM NaCl, 0.02% sodium azide and 50% glycerol.	
Immunogen	A synthesized peptide derived from human Calmodulin	
concentration	500 ug/ml	
Purification	Affinity-chromatography	
Observed MW	17KD	
Dilution Ratios	Western blot (WB): 1:500-2000 Immunohistochemistry in paraffin section (IHC): 1:20-100 Immunocytochemistry/Immunofluorescence (ICC/IF): 1:20-100 Immunoprecipitation: 1:20 Flow cytometry (FCM): 1:20	

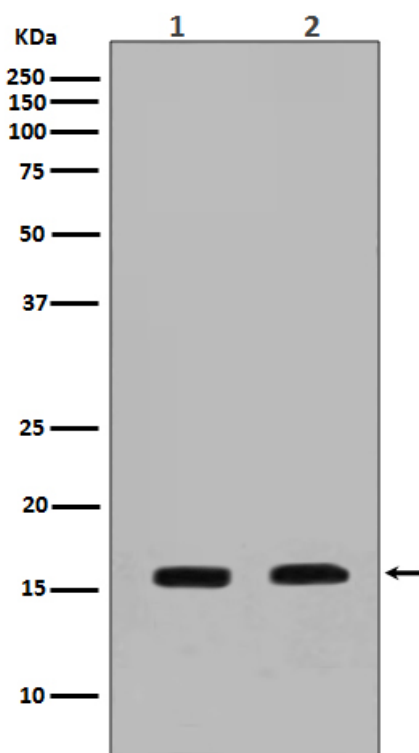
Storage

12 months from date of receipt, -20°C as supplied. 6 months 2 to 8°C after reconstitution. Avoid repeated freezing and thawing.

Reference

Anti-CAMTA3 Antibody被引用在1文献中。

Selected Validation Data



Western blot analysis of Calmodulin expression in (1) NIH-3T3 cell lysate; (2) MCF-7 cell lysate.