

Basic Information

Product Name	Anti-BRAF Antibody	
Gene Name	BRAF	
Source	Rabbit	
Isotype	IgG	
Species Reactivity	human, mouse, rat	
Tested Application	WB, IHC, IP, FCM	
Contents	500 ug/ml; Rabbit IgG in phosphate buffered saline, pH 7.4, 150mM NaCl, 0.02% sodium azide and 50% glycerol.	
Immunogen	A synthesized peptide derived from human B Raf	
concentration	500 ug/ml	
Purification	Affinity-chromatography	
Observed MW	85KD	
Dilution Ratios	Western blot (WB): 1:500-2000 Immunohistochemistry in paraffin section (IHC): 1:20-100 Immunoprecipitation: 1:20 Flow cytometry (FCM): 1:20	

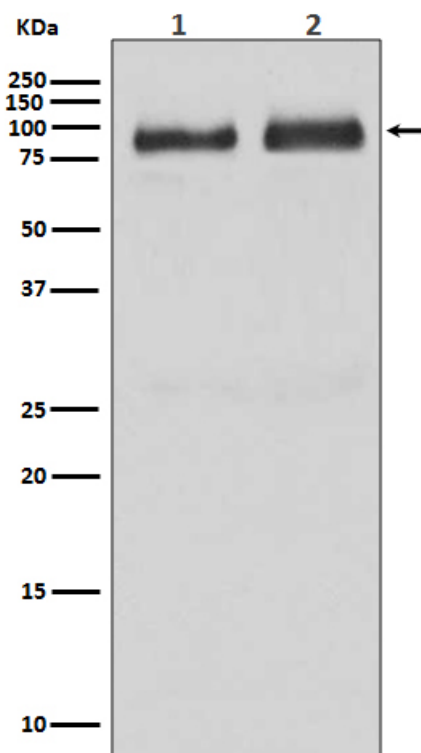
Storage

12 months from date of receipt, -20°C as supplied. 6 months 2 to 8°C after reconstitution. Avoid repeated freezing and thawing.

Background Information

BRAF (v-raf murine sarcoma viral oncogene homolog B1) is a human gene that makes a protein called B-Raf. It is a member of the Raf kinase family of growth signal transduction protein kinases. This protein plays a role in regulating the MAP kinase/ERKs signaling pathway, which affects cell division, differentiation, and secretion. It is mapped to 7q34. Mutations in this gene are associated with cardiofaciocutaneous syndrome, a disease characterized by heart defects, mental retardation and a distinctive facial appearance. The BRAF protein is also involved in sending signals inside cells, which are involved in directing cell growth.

Selected Validation Data



Western blot analysis of B Raf expression in (1) Human brain lysate
(2) HepG2 cell lysate.