

Basic Information

Product Name	Anti-Osteopontin/SPP1 Antibody	
Gene Name	SPP1	
Source	Rabbit	
Isotype	IgG	
Species Reactivity	human, mouse	
Tested Application	WB, ICC/IF, FCM	
Contents	500 ug/ml; Rabbit IgG in phosphate buffered saline, pH 7.4, 150mM NaCl, 0.02% sodium azide and 50% glycerol.	
Immunogen	A synthesized peptide derived from human Osteopontin	
concentration	500 ug/ml	
Purification	Affinity-chromatography	
Observed MW	35KD	
Dilution Ratios	Western blot (WB): 1:500-2000 Immunocytochemistry/Immunofluorescence (ICC/IF): 1:20-100 Flow cytometry (FCM): 1:20	

Storage

12 months from date of receipt, -20°C as supplied. 6 months 2 to 8°C after reconstitution. Avoid repeated freezing and thawing.

Background Information

Osteopontin (OPN), also known as secreted phosphoprotein 1 (SPP1), is a protein that in humans is encoded by the SPP1 gene (secreted phosphoprotein 1). The protein encoded by this gene is involved in the attachment of osteoclasts to the mineralized bone matrix. And the encoded protein is secreted and binds hydroxyapatite with high affinity. The osteoclast vitronectin receptor is found in the cell membrane and may be involved in the binding to this protein. Also, this protein is a cytokine that upregulates expression of interferon-gamma and interleukin-12. Several transcript variants encoding different isoforms have been found for this gene.

Reference

Anti-Osteopontin/SPP1 Antibody被引用在1文献中。

Selected Validation Data

KDa

250

150

100

75

50

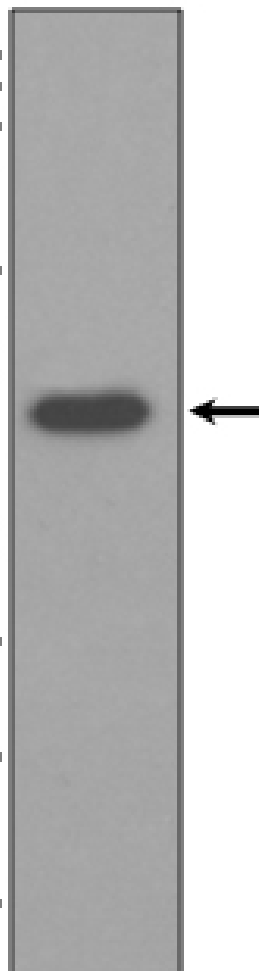
37

25

20

15

10



Western blot analysis of Osteopontin expression in HepG2 cell lysate.