

Basic Information

Product Name	Anti-LGR5 Antibody
Gene Name	LGR5
Source	Rabbit
Isotype	IgG
Species Reactivity	human, mouse, rat
Tested Application	WB, IP, FCM
Contents	500 ug/ml; Rabbit IgG in phosphate buffered saline, pH 7.4, 150mM NaCl, 0.02% sodium azide and 50% glycerol.
Immunogen	A synthesized peptide derived from human LGR5/GPR49
concentration	500 ug/ml
Purification	Affinity-chromatography
Observed MW	100KD
Dilution Ratios	Western blot (WB): 1:500-2000 Immunoprecipitation: 1:20 Flow cytometry (FCM): 1:20

Storage

12 months from date of receipt, -20°C as supplied. 6 months 2 to 8°C after reconstitution. Avoid repeated freezing and thawing.

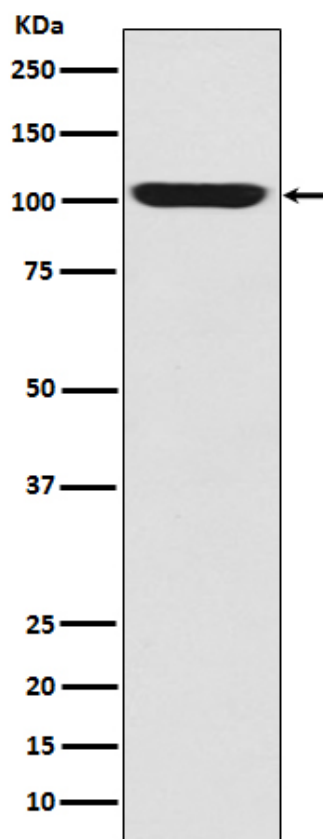
Background Information

Leucine-rich repeat G-protein-coupled receptor 5 (Lgr5), also called GPR49, is a 907 amino acid (aa), approximately 97 kDa (calculated), seven-transmembrane glycoprotein receptor in the Lgr family of cell surface receptors. The subfamily of Lgrs comprising Lgr4, Lgr5, and Lgr6 are G-protein-independent mediators of the potentiating effect of R-spondins on Wnt signaling (2). Lgr5 binds and forms complexes with R-spondins, Frizzled Wnt receptors and LRP Wnt co-receptors. The region of the human Lgr5 long extracellular domain used as an immunogen shares 90% amino acid sequence identity with mouse and rat Lgr5, respectively. Lgr5 is found on embryonic and adult epithelial stem cells (3). Lgr5+ stem cells can produce all epithelial cell types of the intestinal crypts (4). Abnormal LGR5 expression and regulation in stem cells might give rise to cancers such as intestinal, hepatocellular, pancreatic and ovarian carcinomas (5,6). This antibody has been referred to as "RD42" in Peng et al. (1).

Reference

Anti-LGR5 Antibody被引用在1文献中。

Selected Validation Data



Western blot analysis of GPR49 expression in Human fetal skeletal muscle lysate.