

Basic Information

Product Name	Anti-VEGFR2/KDR Antibody
Gene Name	KDR
Source	Rabbit
Isotype	IgG
Species Reactivity	human
Tested Application	WB
Contents	500 ug/ml; Rabbit IgG in phosphate buffered saline, pH 7.4, 150mM NaCl, 0.02% sodium azide and 50% glycerol.
Immunogen	A synthesized peptide derived from human VEGF Receptor 2
concentration	500 ug/ml
Purification	Affinity-chromatography
Observed MW	210,230KD
Dilution Ratios	Western blot (WB):1:400-800

Storage

12 months from date of receipt, -20°C as supplied. 6 months 2 to 8°C after reconstitution. Avoid repeated freezing and thawing.

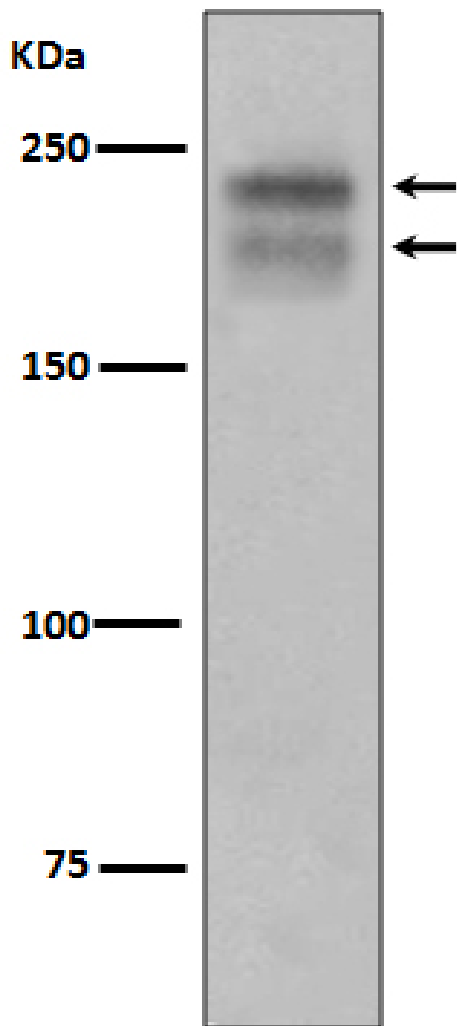
Background Information

KDR (Kinase Insert Domain Receptor), also known as FLK1, VEGFR or VEGFR2, is a VEGF receptor. KDR is the human gene encoding it. Sait et al. (1995) likewise corrected the assignment to chromosome 4q11-q12 to the same region occupied also by PDGFRA and KIT, thus indicating the location of a cluster of receptor tyrosine kinase genes. Vascular endothelial growth factor (VEGF) is the only mitogen that specifically acts on endothelial cells. Its expression is upregulated by hypoxia, and its cell-surface receptor, known as fetal liver kinase-1 (Flk1) in mouse, is exclusively expressed in endothelial cells (Plate et al., 1993). Flk1 is the mouse homolog of KDR (Matthews et al., 1991).

Reference

Anti-VEGFR2/KDR Antibody被引用在1文献中。

Selected Validation Data



Western blot analysis of VEGFR2 expression in Human placenta lysate.