

## Basic Information

Product Name	Anti-GFAP Antibody	
Gene Name	GFAP	
Source	Rabbit	
Isotype	IgG	
Species Reactivity	human,mouse,rat	
Tested Application	WB,IHC,ICC/IF	
Contents	500 ug/ml;Rabbit IgG in phosphate buffered saline, pH 7.4, 150mM NaCl, 0.02% sodium azide and 50% glycerol.	
Immunogen	A synthesized peptide derived from human GFAP	
concentration	500 ug/ml	
Purification	Affinity-chromatography	
Observed MW	50KD	
Dilution Ratios	Western blot (WB): 1:1000-5000 Immunohistochemistry in paraffin section (IHC): 1:20-100 Immunocytochemistry/Immunofluorescence (ICC/IF): 1:20-100	

## Storage

12 months from date of receipt, -20°C as supplied. 6 months 2 to 8°C after reconstitution. Avoid repeated freezing and thawing.

## Background Information

Glial fibrillary acidic protein (GFAP) is a protein that is encoded by the GFAP gene in humans. It is an intermediate filament(IF) protein that is expressed by numerous cell types of the central nervous system (CNS) including astrocytes, and ependymal cells. It is mapped to 17q21.31. GFAP is closely related to its non-epithelial family members, vimentin, desmin, and peripherin, which are all involved in the structure and function of the cell's cytoskeleton. GFAP is thought to help to maintain astrocyte mechanical strength, as well as the shape of cells. This gene has been shown to play a role in mitosis by adjusting the filament network present in the cell. GFAP is necessary for many critical roles in the CNS. What's more, GFAP also plays a role in astrocyte-neuron interactions as well as cell-cell communication.

## Reference

Anti-GFAP Antibody被引用在10文献中。

## Selected Validation Data

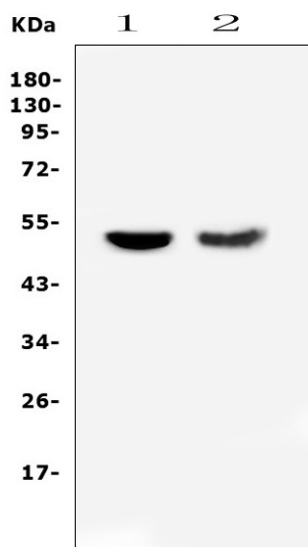


Figure 1. Western blot analysis of Anti-GFAP antibody (BM4287).

The sample well of each lane was loaded with 50ug of sample under reducing conditions. Lane 1: Rat brain tissue lysates, Lane 2: Mouse brain tissue lysates, Use rabbit Anti-GFAP 1:1000, probed with a goat anti-rabbit IgG-HRP secondary antibody. The signal is developed using an Enhanced Chemiluminescent detection (ECL) kit (Catalog # EK1002). A specific band was detected for GFAP at approximately 50KD. The expected band size for GFAP is at 50KD.