

Basic Information

Product Name	Anti-SRC (Phospho-Y419) Antibody
Gene Name	SRC
Source	Rabbit
Isotype	IgG
Species Reactivity	human, mouse, rat
Tested Application	WB, FCM
Contents	500 ug/ml; Rabbit IgG in phosphate buffered saline, pH 7.4, 150mM NaCl, 0.02% sodium azide and 50% glycerol.
Immunogen	A synthesized peptide derived from human Phospho-Src (Y419)
concentration	500 ug/ml
Purification	Affinity-chromatography
Observed MW	60KD
Dilution Ratios	Western blot (WB): 1:500-2000 Flow cytometry (FCM): 1:20

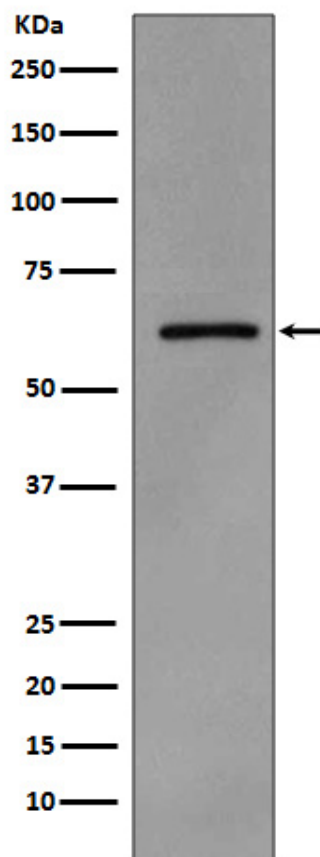
Storage

12 months from date of receipt, -20°C as supplied. 6 months 2 to 8°C after reconstitution. Avoid repeated freezing and thawing.

Background Information

Sarcoma (Scr) is a proto-oncogenic tyrosine kinase originally discovered by J. Michael Bishop and Harold E. Varmus. belongs to a family of non-receptor tyrosine kinases called Src family kinases. The human SRC protooncogene was assigned to chromosome 20. Its gene is mapped to 20q12-q13. The discovery of Src family proteins has been instrumental to the modern understanding of cancer as a disease where normally healthy cellular signalling has gone awry. This proto-oncogene may play a role in the regulation of embryonic development and cell growth.

Selected Validation Data



Western blot analysis of Phospho-Src (Y419) expression in A431 cell lysate treated with pervanadate.