

Basic Information

Product Name	Anti-Integrin Beta 1/ITGB1 Antibody	
Gene Name	ITGB1	
Source	Rabbit	
Isotype	IgG	
Species Reactivity	human, mouse, rat	
Tested Application	WB, IHC	
Contents	500 ug/ml; Rabbit IgG in phosphate buffered saline, pH 7.4, 150mM NaCl, 0.02% sodium azide and 50% glycerol.	
Immunogen	A synthesized peptide derived from human Integrin beta 1	
concentration	500 ug/ml	
Purification	Affinity-chromatography	
Observed MW	140KD	
Dilution Ratios	Western blot (WB): 1:500-2000 Immunohistochemistry in paraffin section (IHC): 1:20-100	

Storage

12 months from date of receipt, -20°C as supplied. 6 months 2 to 8°C after reconstitution. Avoid repeated freezing and thawing.

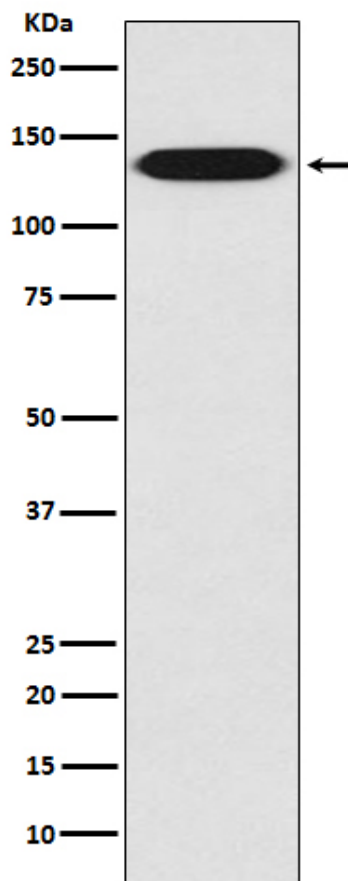
Background Information

Integrin beta-1, also known as CD29, is a protein that in humans is encoded by the ITGB1 gene. CD29 is an integrin unit associated with very late antigen receptors. It is known to conjoin with alpha-3 subunit to create alpha3beta1 complex that reacts to such molecules as netrin-1 and reelin. This gene contains a beta subunit that appears to be analogous to band-3 of integrin. It is mapped to 10p11.22. It is found that FER mediates crosstalk between CDH2 and CD29. Integrin family members are membrane receptors involved in cell adhesion and recognition in a variety of processes including embryogenesis, hemostasis, tissue repair, immune response and metastatic diffusion of tumor cells. The protein encoded by this gene is a beta subunit.

Reference

Anti-Integrin Beta 1/ITGB1 Antibody被引用在3文献中。

Selected Validation Data



Western blot analysis of Integrin beta 1 expression in A431 cell lysate.