

Basic Information

Product Name	Anti-LBR Antibody	
Gene Name	LBR	
Source	Rabbit	
Isotype	IgG	
Species Reactivity	human, rat	
Tested Application	WB, IHC, ICC/IF	
Contents	500 ug/ml; Rabbit IgG in phosphate buffered saline, pH 7.4, 150mM NaCl, 0.02% sodium azide and 50% glycerol.	
Immunogen	A synthesized peptide derived from human Lamin B Receptor	
concentration	500 ug/ml	
Purification	Affinity-chromatography	
Observed MW	71KD	
Dilution Ratios	Western blot (WB): 1:500-2000 Immunohistochemistry in paraffin section (IHC): 1:20-100 Immunocytochemistry/Immunofluorescence (ICC/IF): 1:20-100	

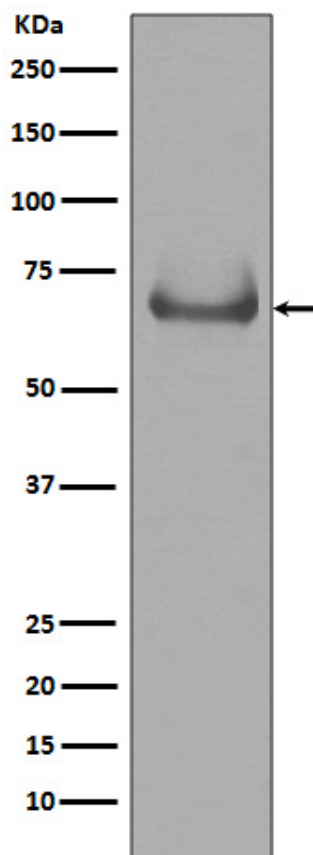
Storage

12 months from date of receipt, -20°C as supplied. 6 months 2 to 8°C after reconstitution. Avoid repeated freezing and thawing.

Background Information

Lamin-B receptor is a protein, and in humans, it is encoded by the LBR gene. It is mapped to 1q42.12. The protein encoded by this gene belongs to the ERG4/ERG24 family. It localized in the nuclear envelope inner membrane and anchors the lamina and the heterochromatin to the membrane. It may mediate interaction between chromatin and lamin B. Mutations of this gene has been associated with autosomal recessive HEM/Greenberg skeletal dysplasia. Alternative splicing occurs at this locus and two transcript variants encoding the same protein have been identified.

Selected Validation Data



Western blot analysis of Lamin B Receptor expression in Jurkat cell lysate.