

Basic Information

Product Name	Anti-P glycoprotein/ABCB1 Antibody	
Gene Name	ABCB1	
Source	Rabbit	
Isotype	IgG	
Species Reactivity	human, mouse, rat	
Tested Application	WB, IHC	
Contents	500 ug/ml; Rabbit IgG in phosphate buffered saline, pH 7.4, 150mM NaCl, 0.02% sodium azide and 50% glycerol.	
Immunogen	A synthesized peptide derived from human P Glycoprotein	
concentration	500 ug/ml	
Purification	Affinity-chromatography	
Observed MW	130-180KD	
Dilution Ratios	Western blot (WB): 1:500-2000 Immunohistochemistry in paraffin section (IHC): 1:20-100	

Storage

12 months from date of receipt, -20°C as supplied. 6 months 2 to 8°C after reconstitution. Avoid repeated freezing and thawing.

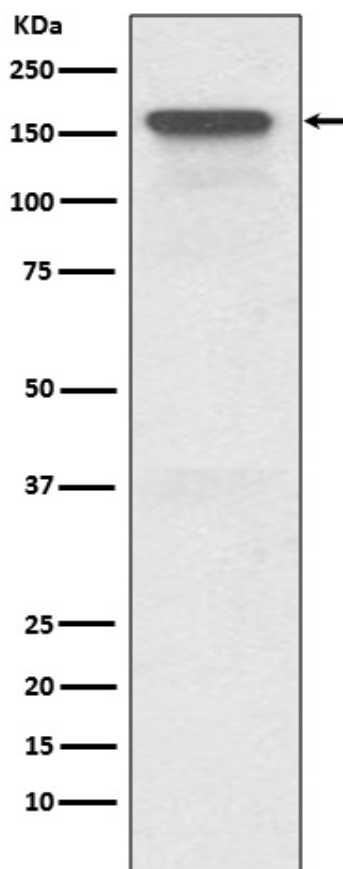
Background Information

P-GP, also called ABCB1 or PGY1, is a glycoprotein that in humans is encoded by the ABCB1 gene. It is mapped to 7q21.12. P-GP is a well-characterized ABC-transporter (which transports a wide variety of substrates across extra- and intracellular membranes) of the MDR/TAP subfamily. It is an important protein of the cell membrane that pumps many foreign substances out of cells. More formally, it is an ATP-dependent drug efflux pump with broad substrate specificity. P-GP is an ATP-dependent drug efflux pump for xenobiotic compounds with broad substrate specificity. It is responsible for decreased drug accumulation in multidrug-resistant cells and often mediates the development of resistance to anticancer drugs. This protein also functions as a transporter in the blood-brain barrier.

Reference

Anti-P glycoprotein/ABCB1 Antibody被引用在1文献中。

Selected Validation Data



Western blot analysis of ABCB1 expression in HeLa cell lysate.