

Basic Information

Product Name	Anti-STAT1 (Phospho-S727) Antibody
Gene Name	STAT1
Source	Rabbit
Isotype	IgG
Species Reactivity	human, mouse, rat
Tested Application	WB, IHC
Contents	Rabbit IgG in phosphate buffered saline , pH 7.4, 150mM NaCl, 0.02% sodium azide and 50% glycerol.
Immunogen	A synthesized peptide derived from human Phospho-STAT1 (S727)
concentration	500 ug/ml
Purification	Affinity-chromatography
Observed MW	91KD/84KD
Dilution Ratios	Western blot: 1:100-400 Immunohistochemistry in paraffin section IHC-(P):1:10-50

Storage

12 months from date of receipt, -20°C as supplied. 6 months 2 to 8°C after reconstitution. Avoid repeated freezing and thawing.

Background Information

The protein encoded by this gene is a member of the STAT protein family. In response to cytokines and growth factors, STAT family members are phosphorylated by the receptor associated kinases, and then form homo- or heterodimers that translocate to the cell nucleus where they act as transcription activators.

Selected Validation Data

Product datasheet

Anti-STAT1 (Phospho-S727) Antibody

Catalog Number: **BM4541**

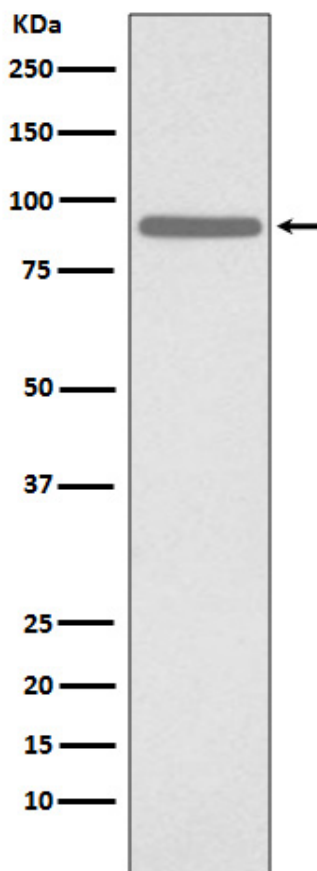
BOSTER

antibody and ELISA experts

BOSTER BIOLOGICAL TECHNOLOGY

Special NO.1, International Enterprise Center,
2nd Guanshan Road, Wuhan, China

Web: www.boster.com.cn **Phone:** +86 027-67845390 **Fax:** +86 027-67845390 **Email:** boster@boster.com.cn



Western blot analysis of Phospho-STAT1 (S727) expression in HeLa cell lysate treated with etoposide.